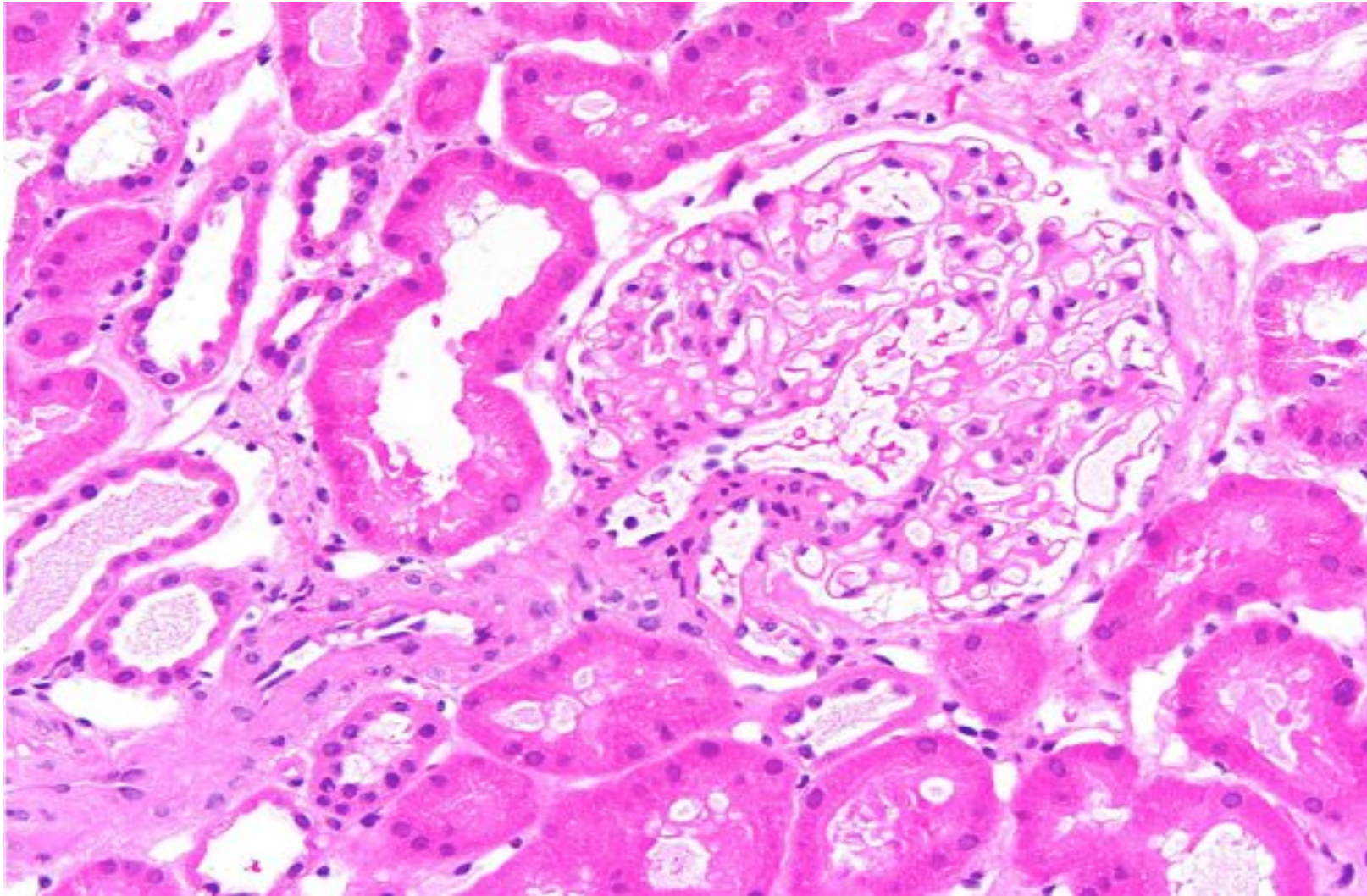


Patterns of GN

- Mesangial proliferative
- Membranous
- Mesangio-capillary proliferative
- Endocapillary proliferative
- Crescentic GN
(Necrotising)

Normal

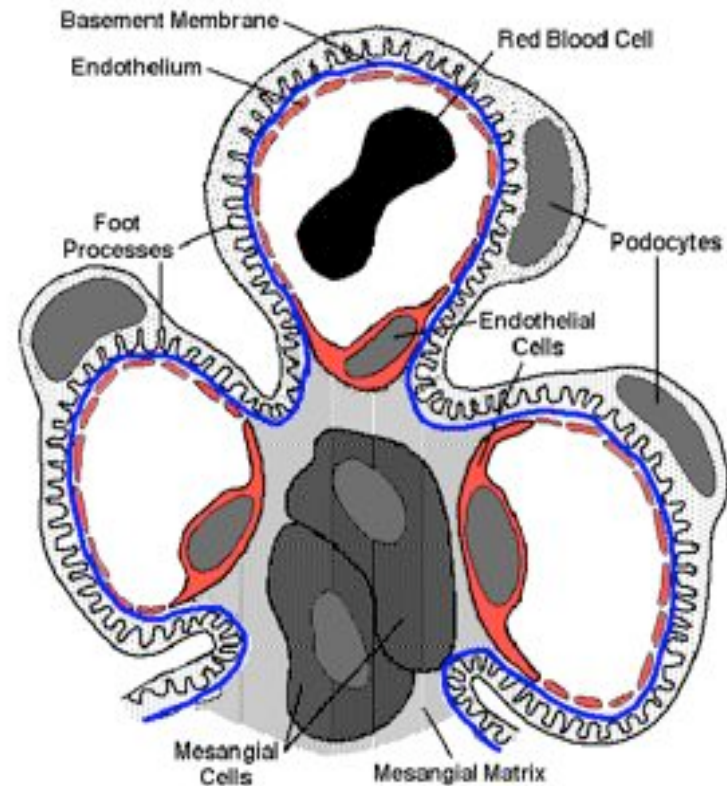


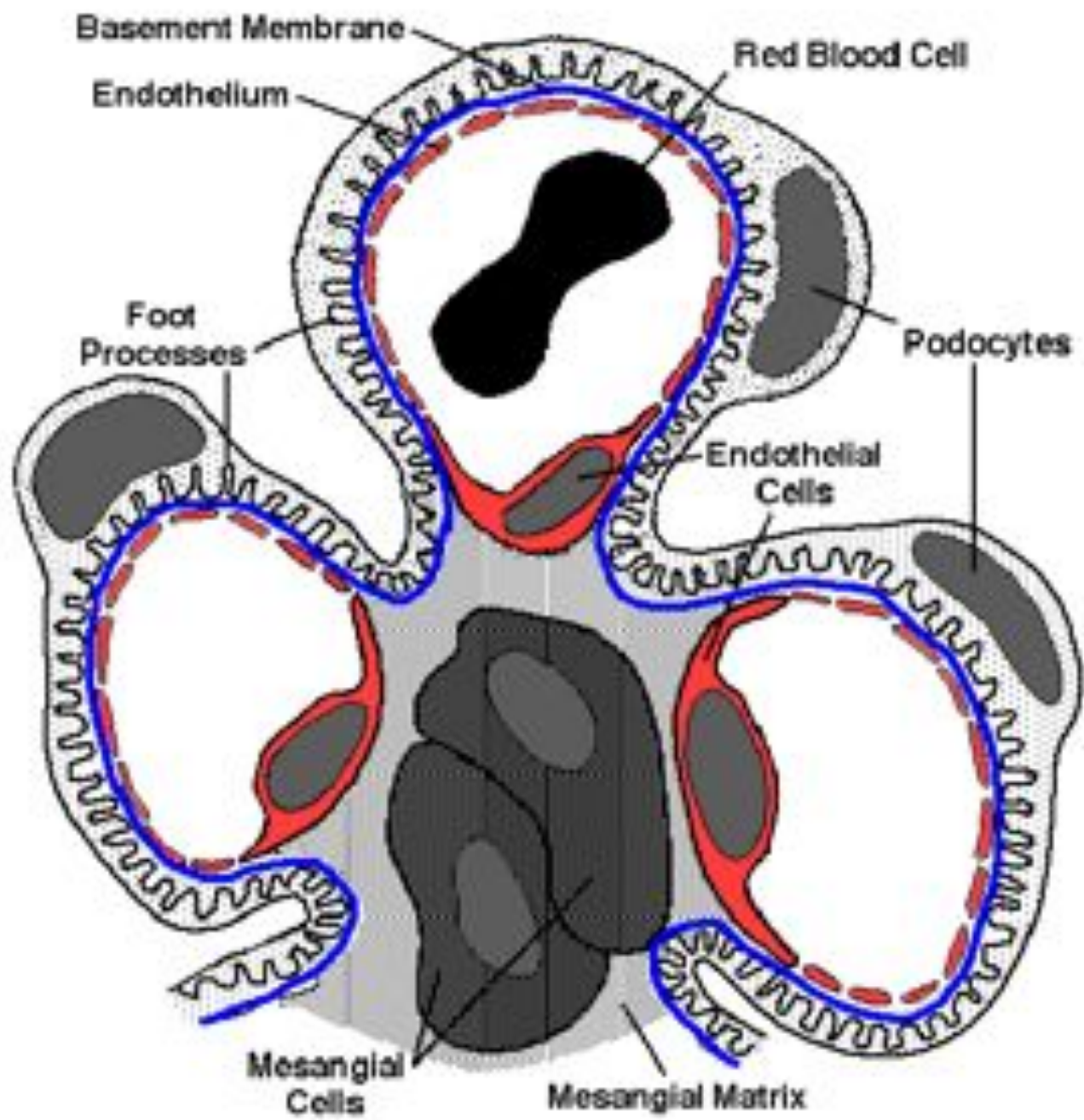
Common terms

- Segmental vs. Global (single glom.)
- Focal vs. Diffuse (50%)
- Glomerulonephritis vs. Glomerulopathy
- Mesangial vs. Loop / peripheral / capillary (site)
- Linear vs. granular (deposits)

Common terms

- Sub-epithelial (epimembranous)
- Intra-membranous
- Sub-endothelial
- Mesangial cellular
- Mesangial matrical





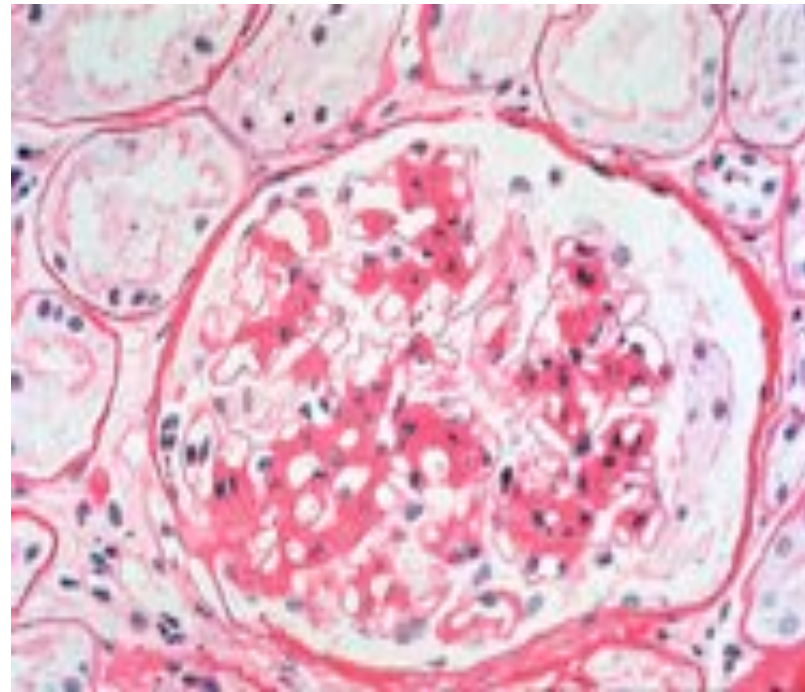
Pattern: Mesangial Proliferative

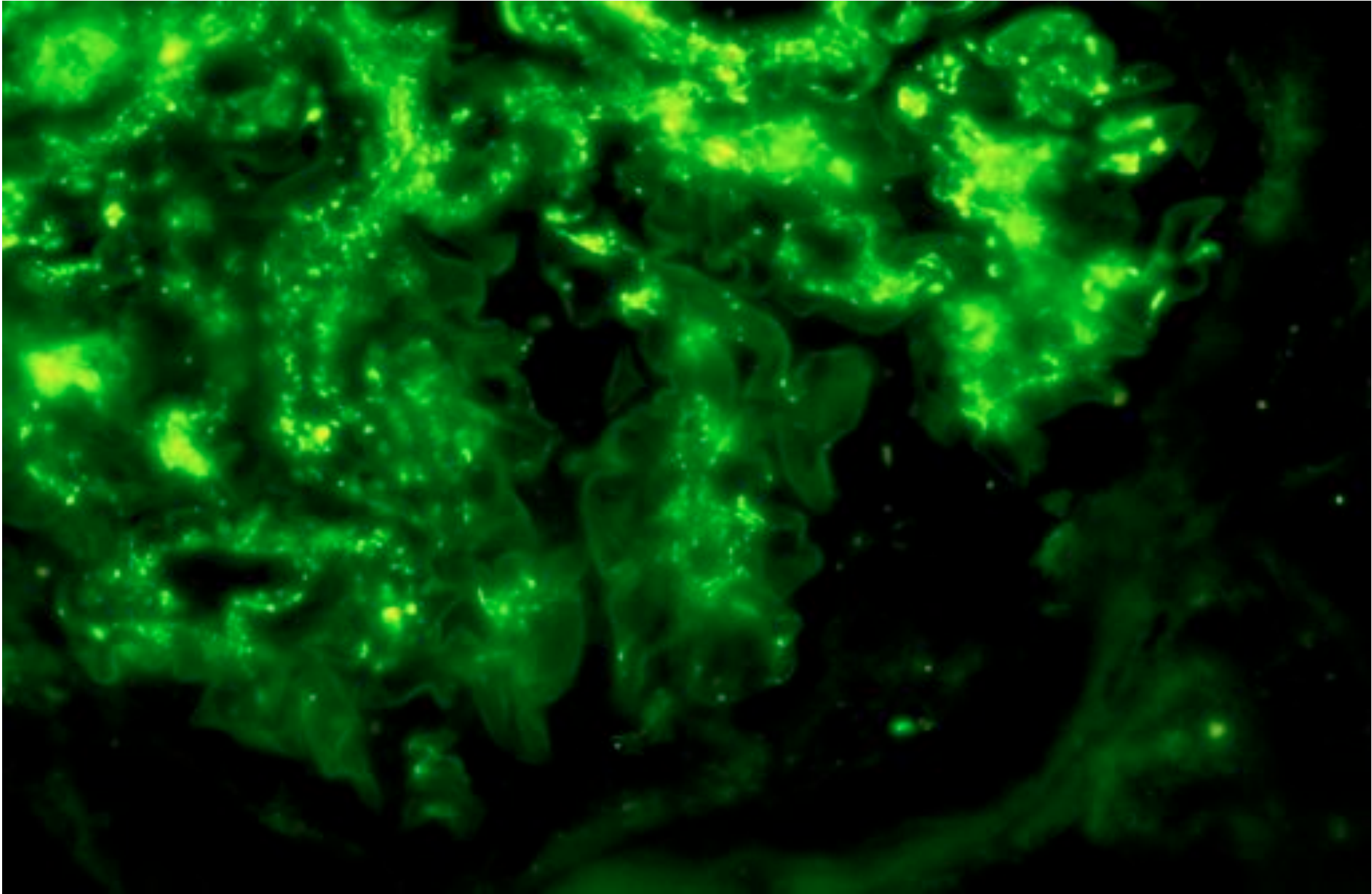
- Mesangial proliferative
- Membranous
- Mesangio-capillary proliferative
- Endocapillary proliferative
- Crescentic

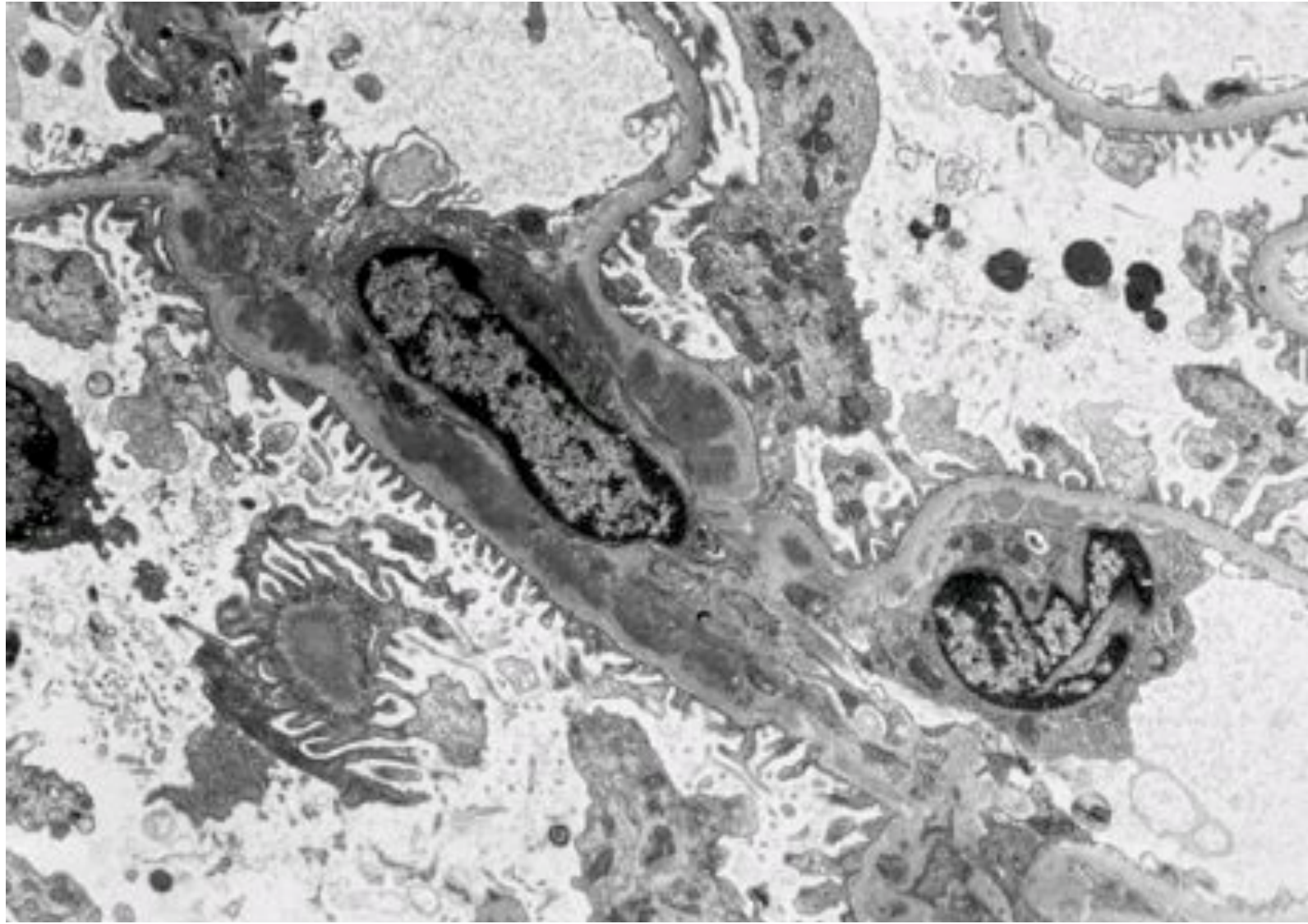


Pattern: Mesangial Proliferative

- Mesangial proliferative
- Membranous
- Mesangio-capillary proliferative
- Endocapillary proliferative
- Crescentic

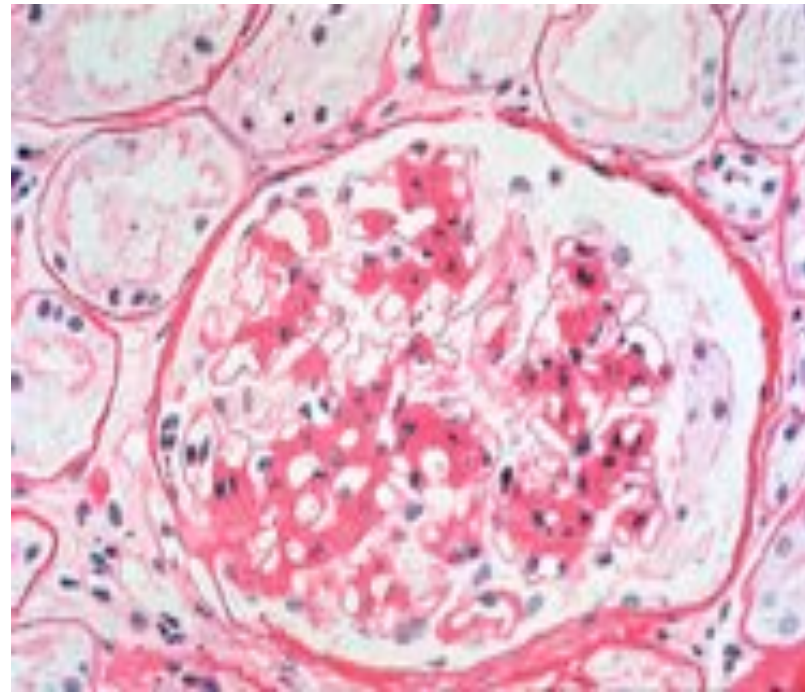






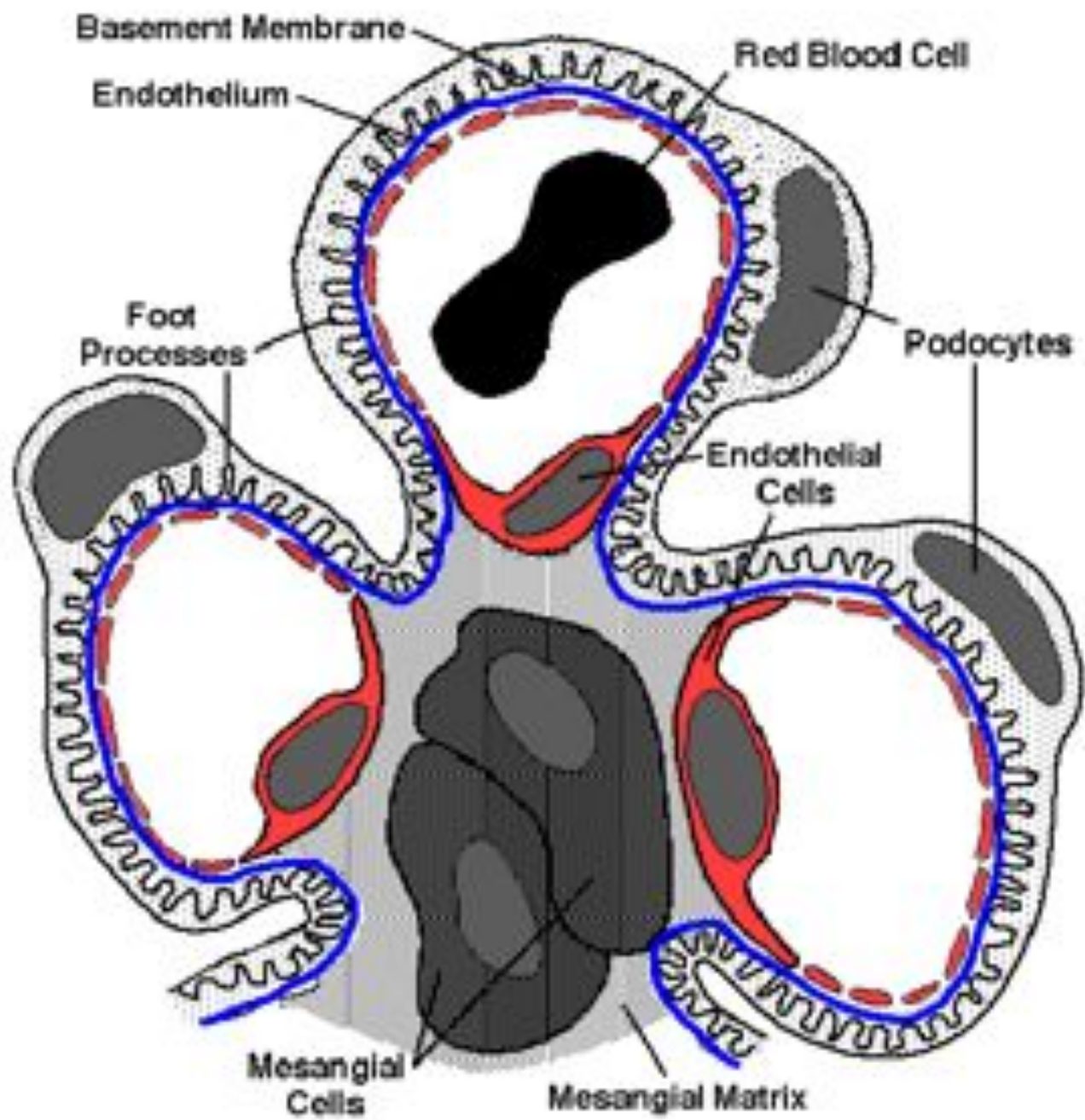
Pattern: Mesangial Proliferative

- Mesangial proliferative
- Membranous
- Mesangio-capillary proliferative
- Endocapillary proliferative
- Crescentic



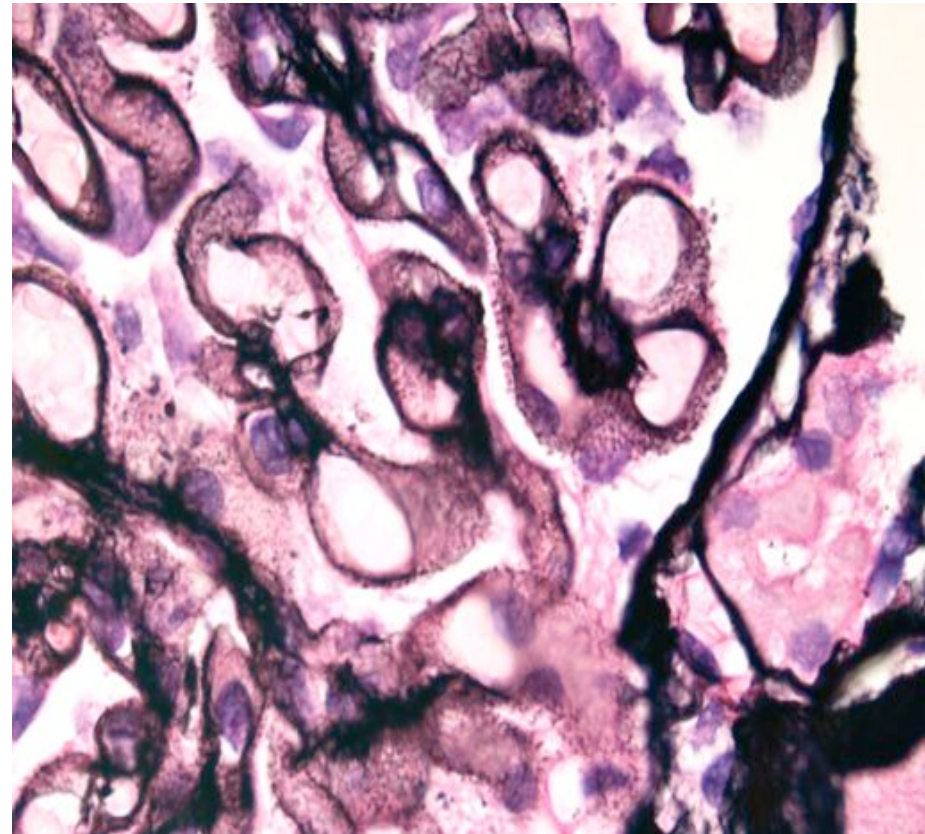
Cases for final MRCPATH exam.

- IgA nephropathy/ Henoch-Schonlein Purpura
- Pauci-immune crescentic GN (Wegener's, Microscopic PAN)
- Anti-GBM GN ("Goodpasture's")
- Lupus (WHO III, IV, V esp)
- Membranous GN
- Mesangio-capillary GN
- Endocapillary proliferative GN
- Minimal Change
- Alport's
- Thin membrane nephropathy
- [Amyloid/Light chain nephropathy]
- FSGS
- Myeloma cast nephropathy
- TIN vs. Ascending infection
- ATN
- Essential hypertension
- Diabetes mellitus
- Malignant hypertension
- HUS/TTP
- Scleroderma
- Pregnancy
- Drugs; Familial; Malig.(DIC); Tx.
- Vasculitis
- Renovascular disease/Embolus



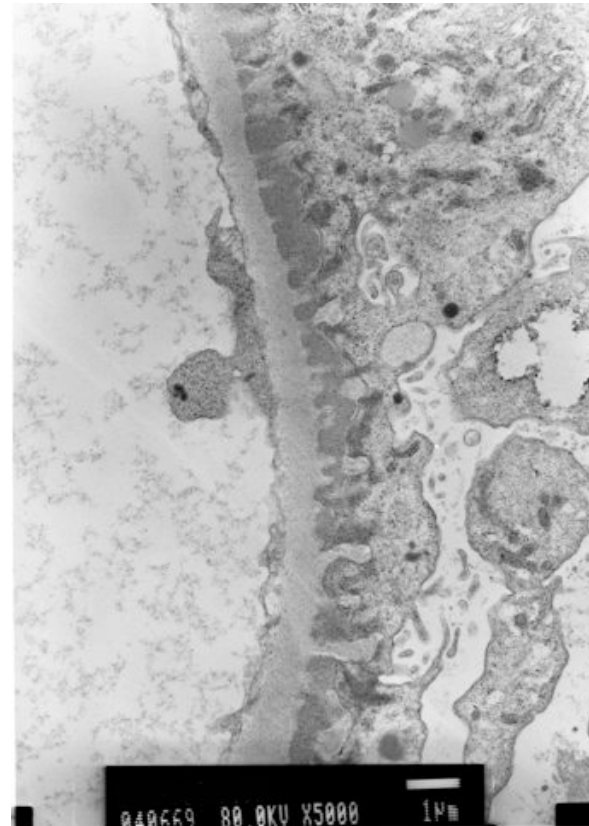
Pattern: Membranous

- Mesangial proliferative
- Membranous
- Mesangio-capillary proliferative
- Endocapillary proliferative
- Crescentic



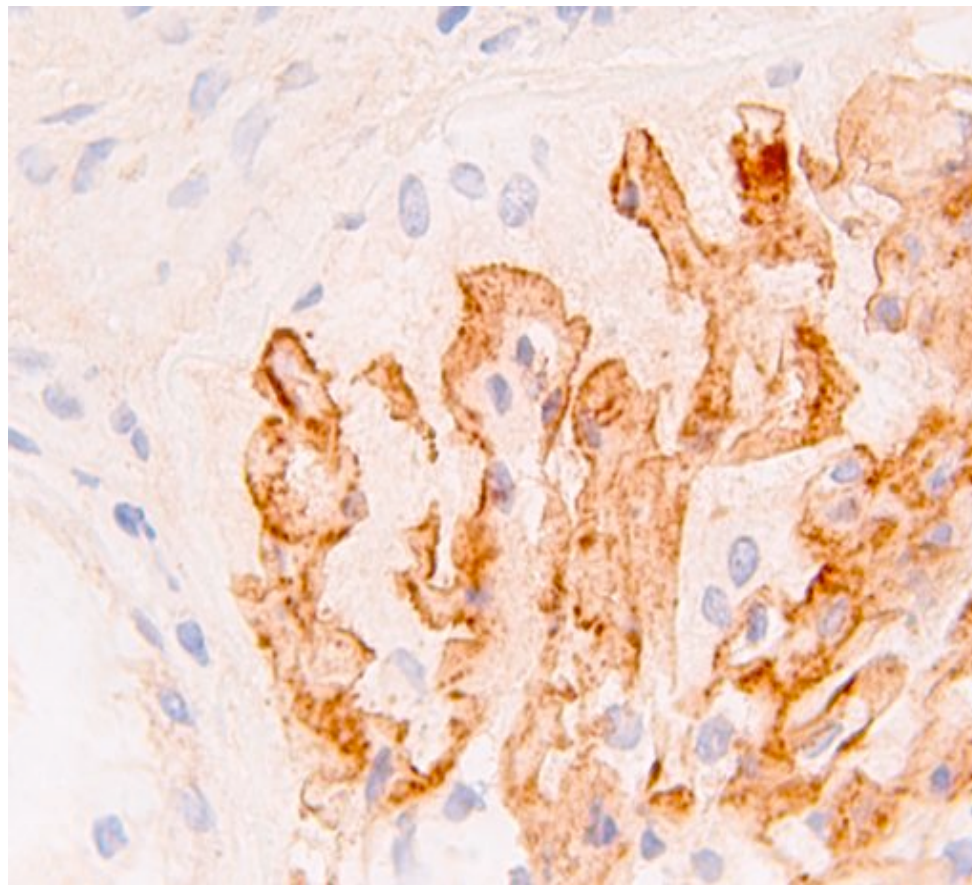
Pattern: Membranous

- Mesangial proliferative
- Membranous
- Mesangio-capillary proliferative
- Endocapillary proliferative
- Crescentic



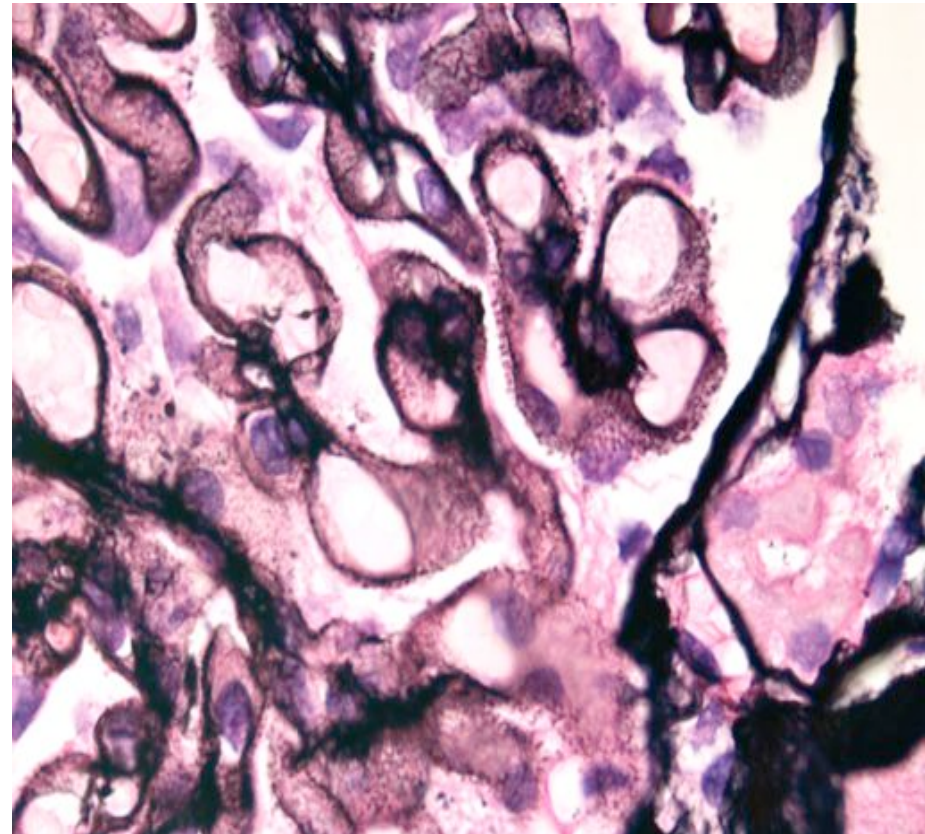
Pattern: Membranous

- Mesangial proliferative
- **Membranous**
- Mesangio-capillary proliferative
- Endocapillary proliferative
- Crescentic



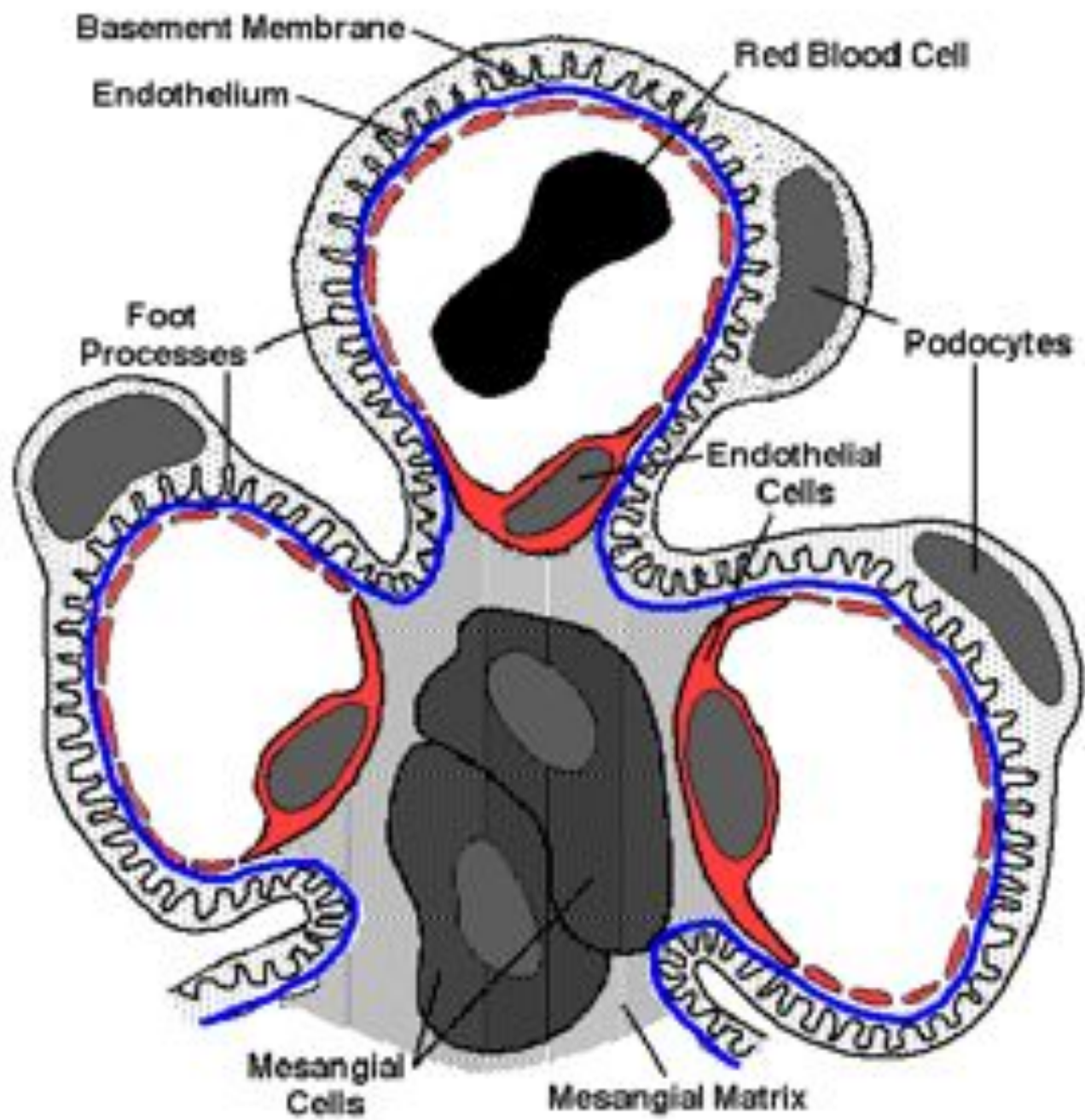
Pattern: Membranous

- Mesangial proliferative
- Membranous
- Mesangio-capillary proliferative
- Endocapillary proliferative
- Crescentic



Cases for final MRCPath exam.

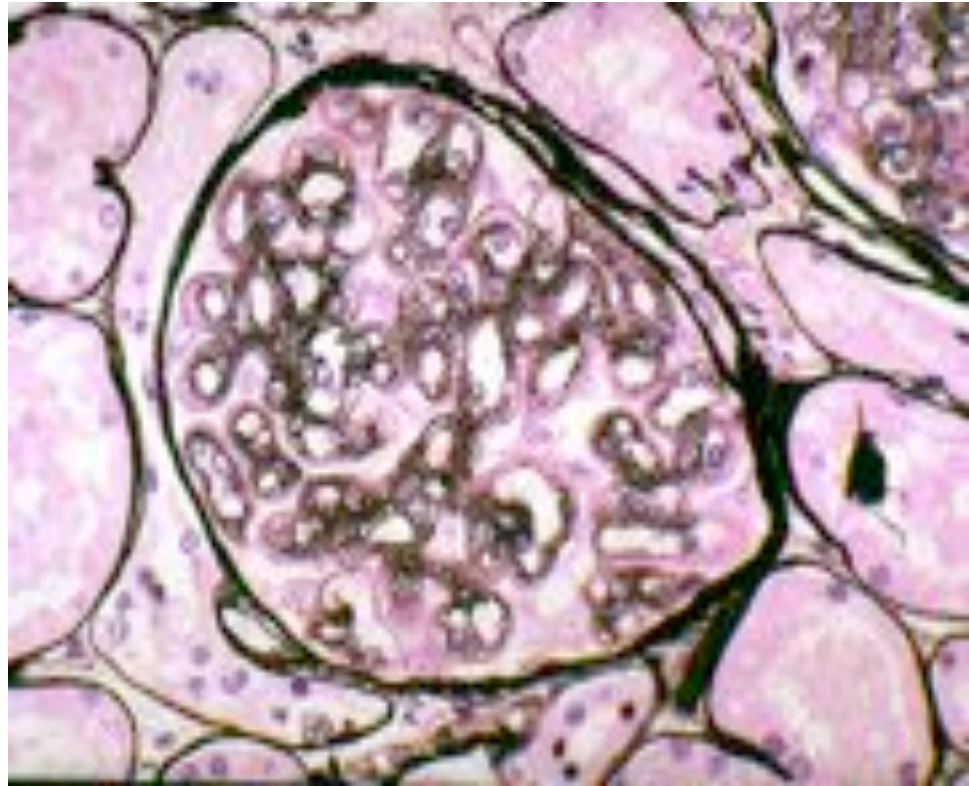
- IgA nephropathy/ Henoch-Schonlein Purpura
- Pauci-immune crescentic GN (Wegener's, Microscopic PAN)
- Anti-GBM GN ("Goodpasture's")
- Lupus (WHO III, IV, V esp)
- Membranous GN
- Mesangio-capillary GN
- Endocapillary proliferative GN
- Minimal Change
- Alport's
- Thin membrane nephropathy
- [Amyloid/Light chain nephropathy]
- FSGS
- Myeloma cast nephropathy
- TIN vs. Ascending infection
- ATN
- Essential hypertension
- Diabetes mellitus
- Malignant hypertension
- HUS/TTP
- Scleroderma
- Pregnancy
- Drugs; Familial; Malig.(DIC); Tx.
- Vasculitis
- Renovascular disease/Embolus



Pattern:

Mesangio-capillary proliferative

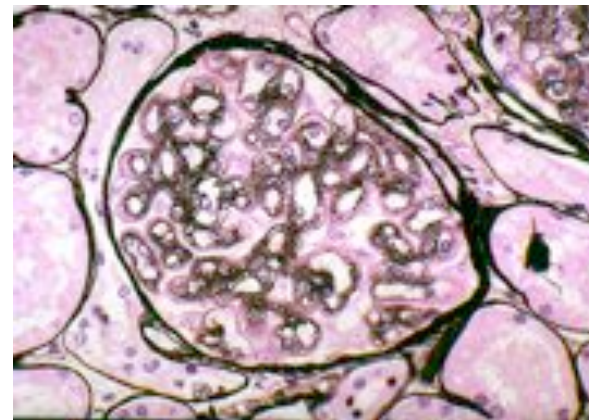
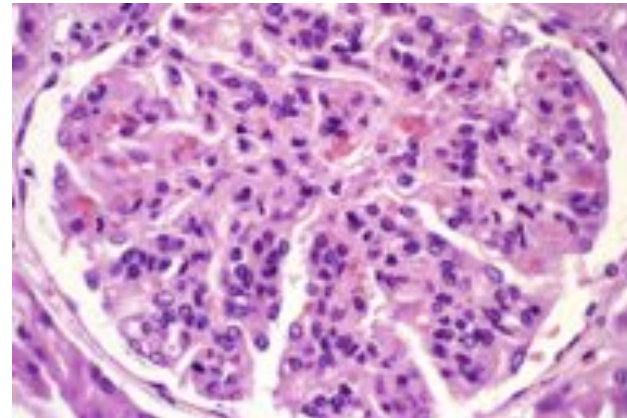
- Mesangial proliferative
- Membranous
- Mesangio-capillary proliferative
- Endocapillary proliferative
- Crescentic



Pattern:

Mesangio-capillary proliferative

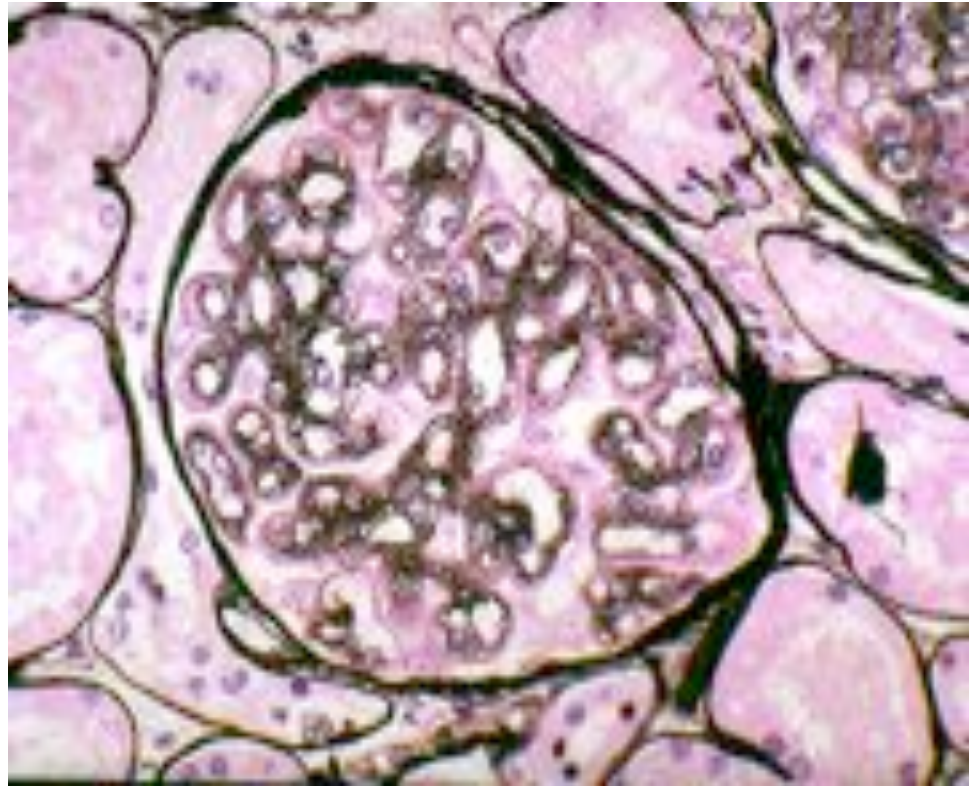
- Mesangial proliferative
- Membranous
- **Mesangio-capillary proliferative**
- Endocapillary proliferative
- Crescentic



Pattern:

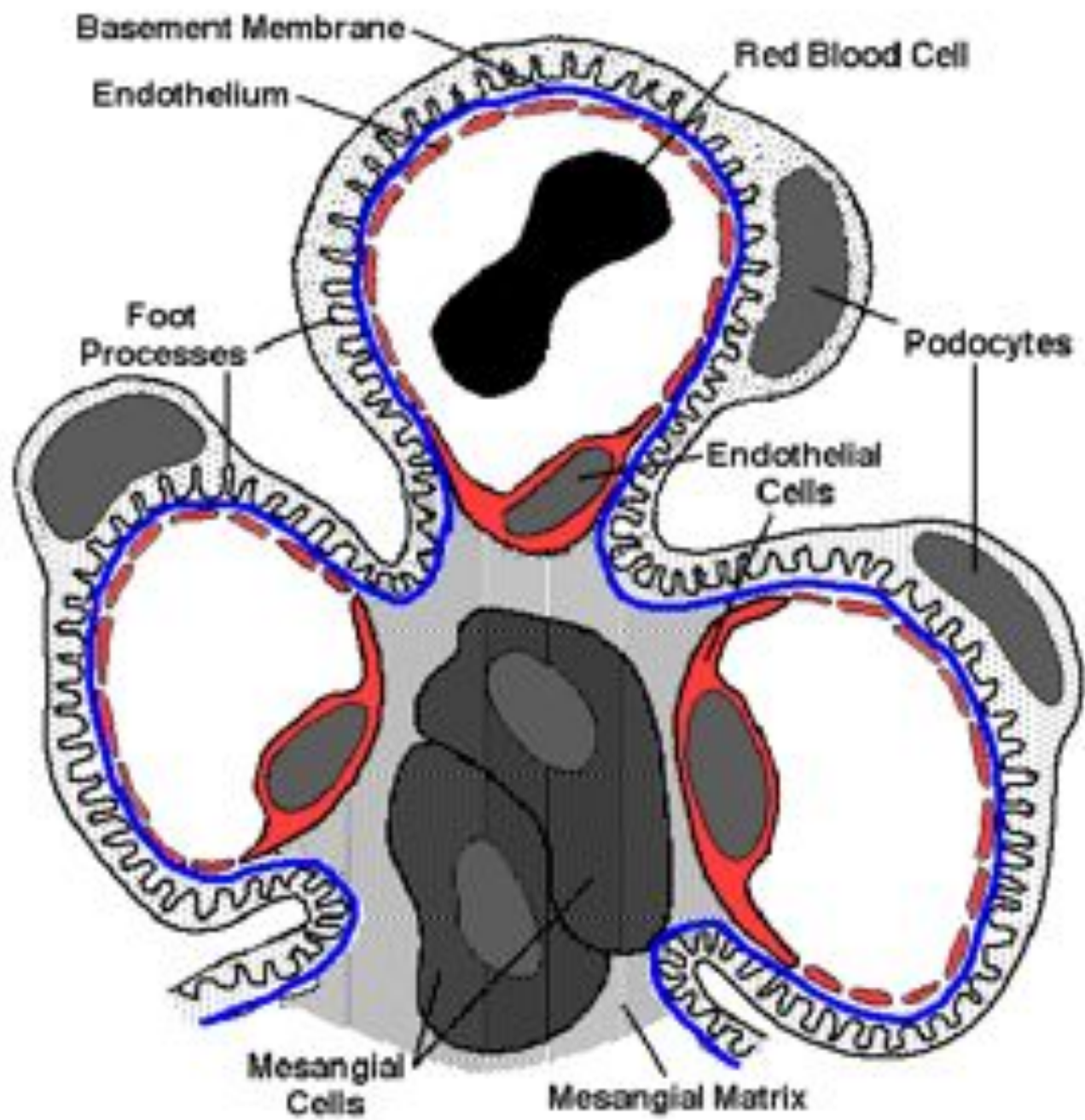
Mesangio-capillary proliferative

- Mesangial proliferative
- Membranous
- Mesangio-capillary proliferative
- Endocapillary proliferative
- Crescentic



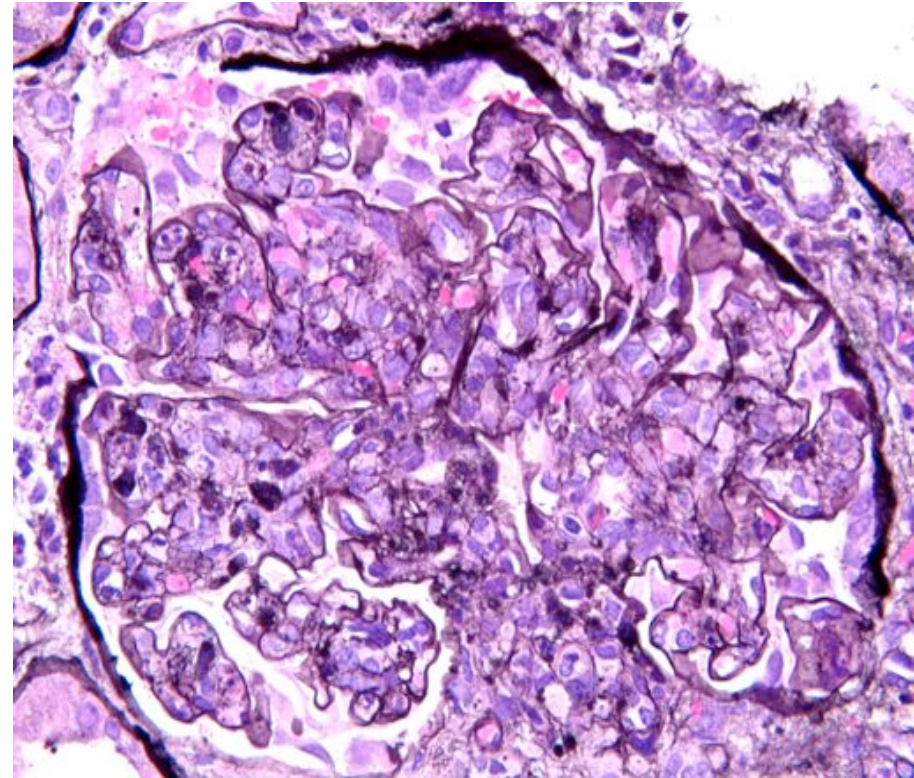
Cases for final MRCPath exam.

- IgA nephropathy/ Henoch-Schonlein Purpura
- Pauci-immune crescentic GN (Wegener's, Microscopic PAN)
- Anti-GBM GN ("Goodpasture's")
- Lupus (WHO III, IV, V esp)
- Membranous GN
- Mesangio-capillary GN
- Endocapillary proliferative GN
- Minimal Change
- Alport's
- Thin membrane nephropathy
- [Amyloid/Light chain nephropathy]
- FSGS
- Myeloma cast nephropathy
- TIN vs. Ascending infection
- ATN
- Essential hypertension
- Diabetes mellitus
- Malignant hypertension
- HUS/TTP
- Scleroderma
- Pregnancy
- Drugs; Familial; Malig.(DIC); Tx.
- Vasculitis
- Renovascular disease/Embolus

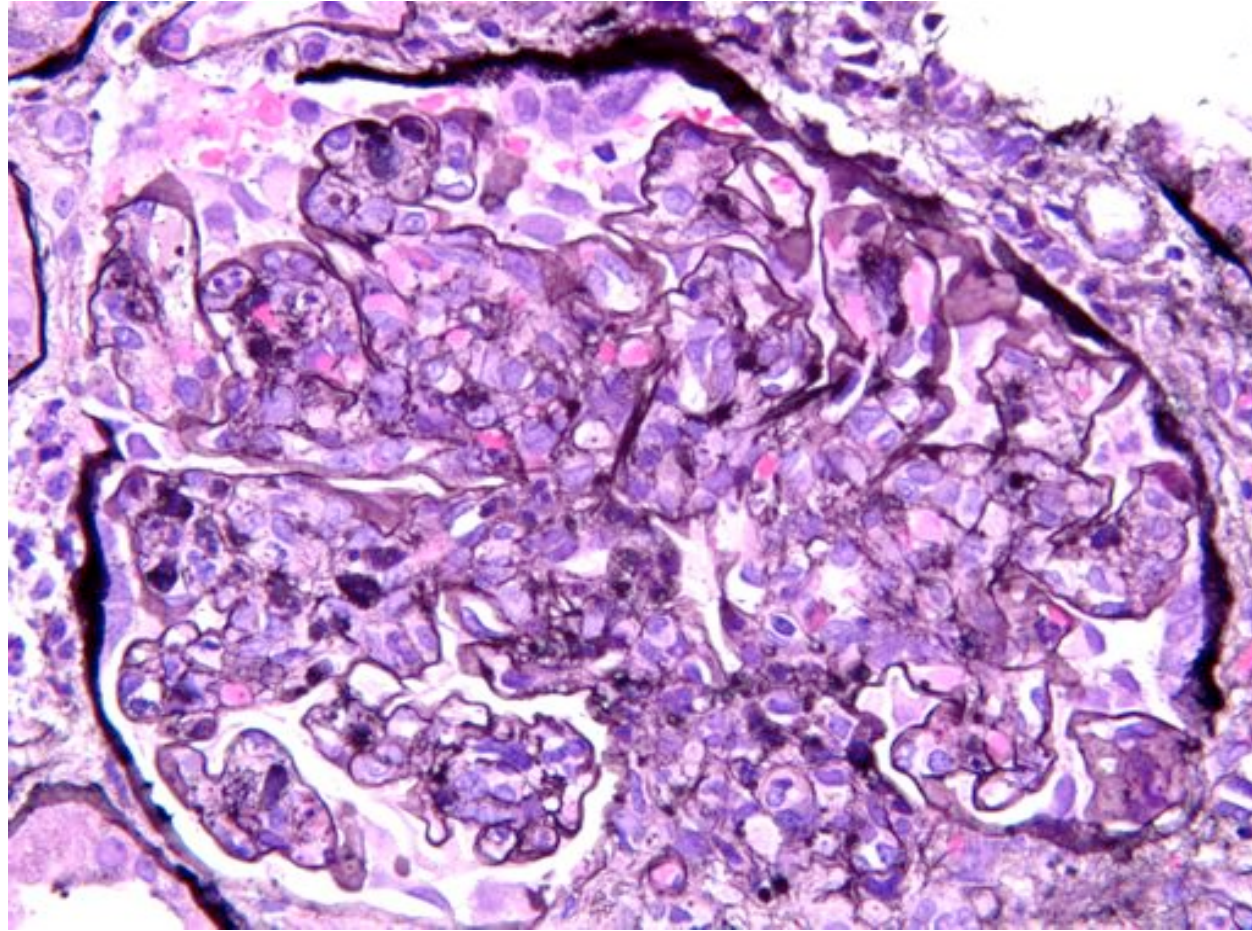


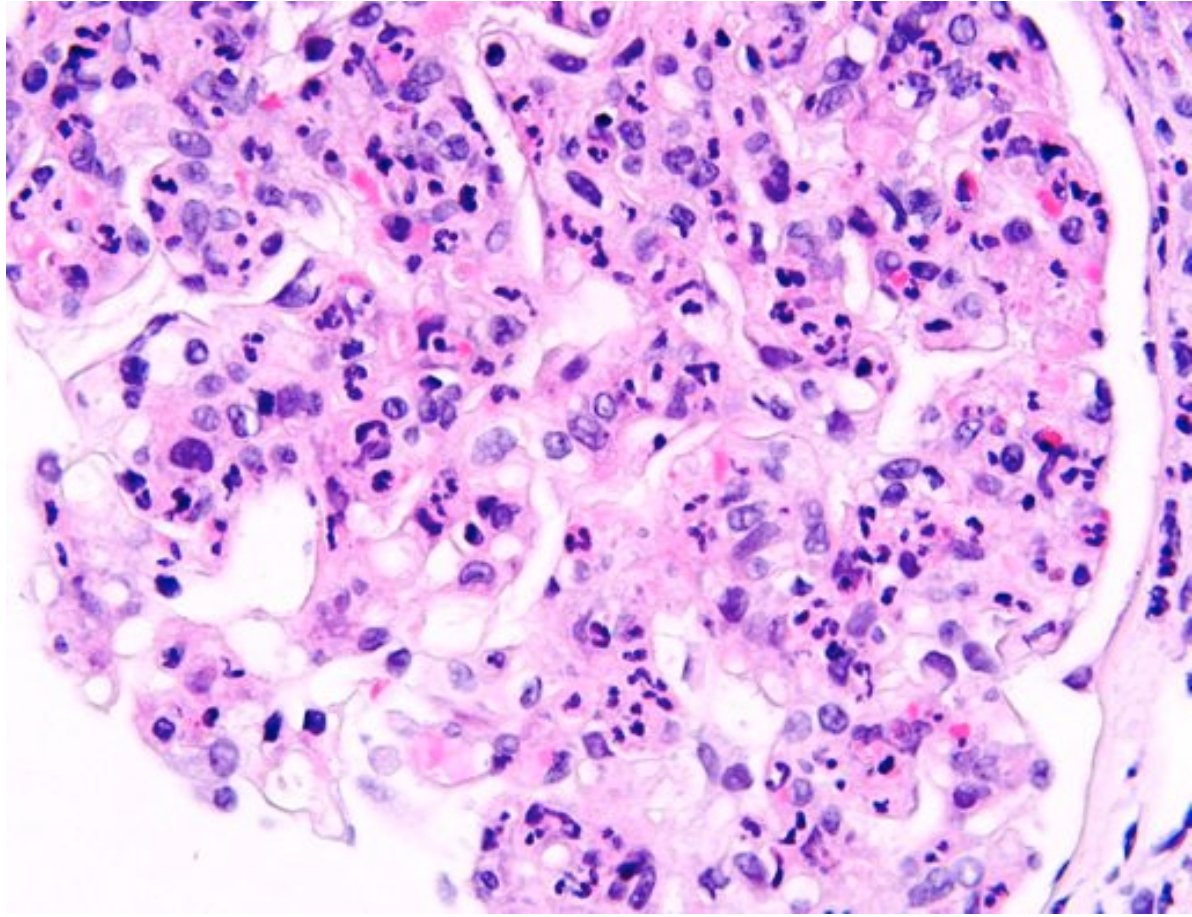
Pattern: Endocapillary proliferative

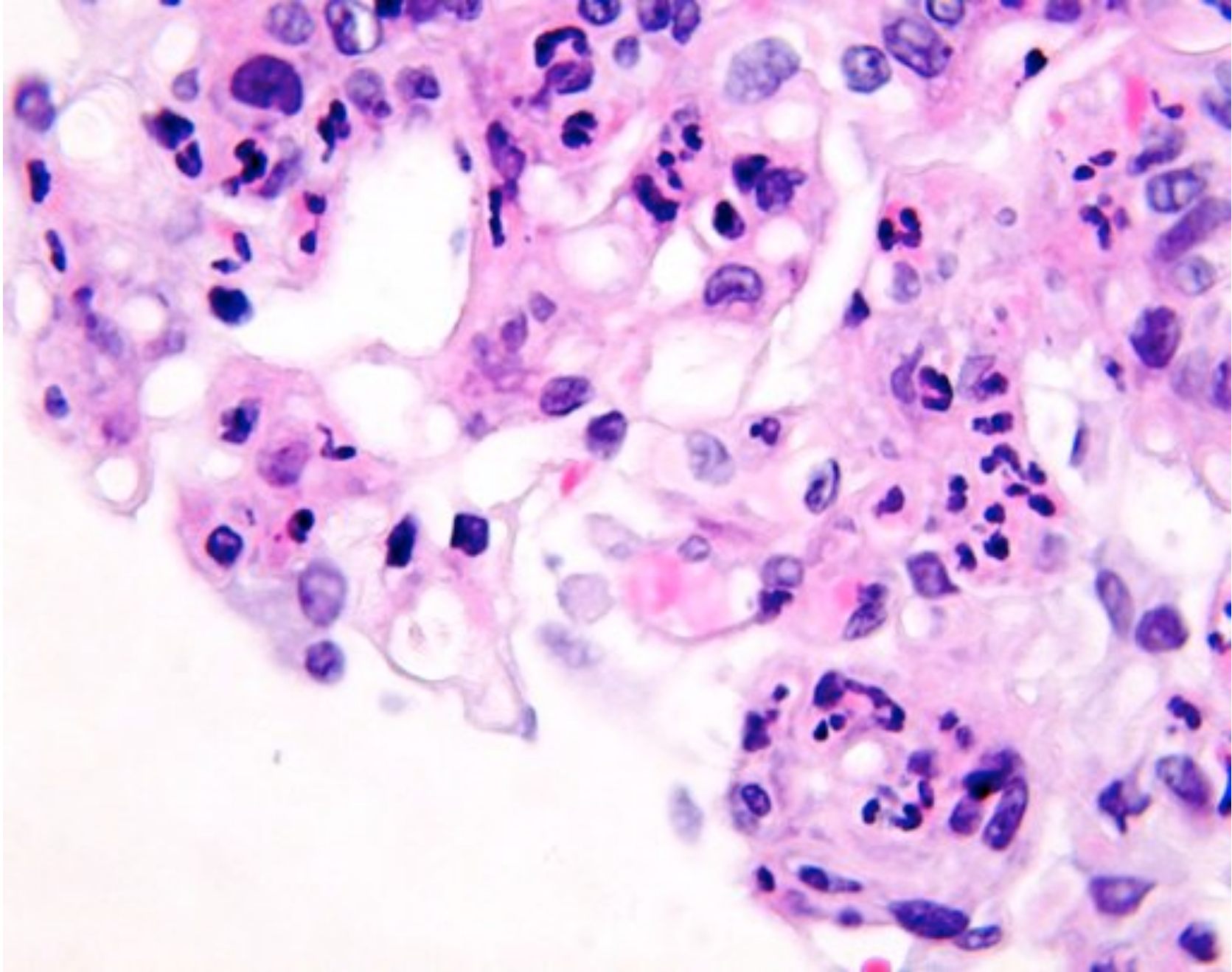
- Mesangial proliferative
- Membranous
- Mesangio-capillary proliferative
- **Endocapillary proliferative**
- Crescentic

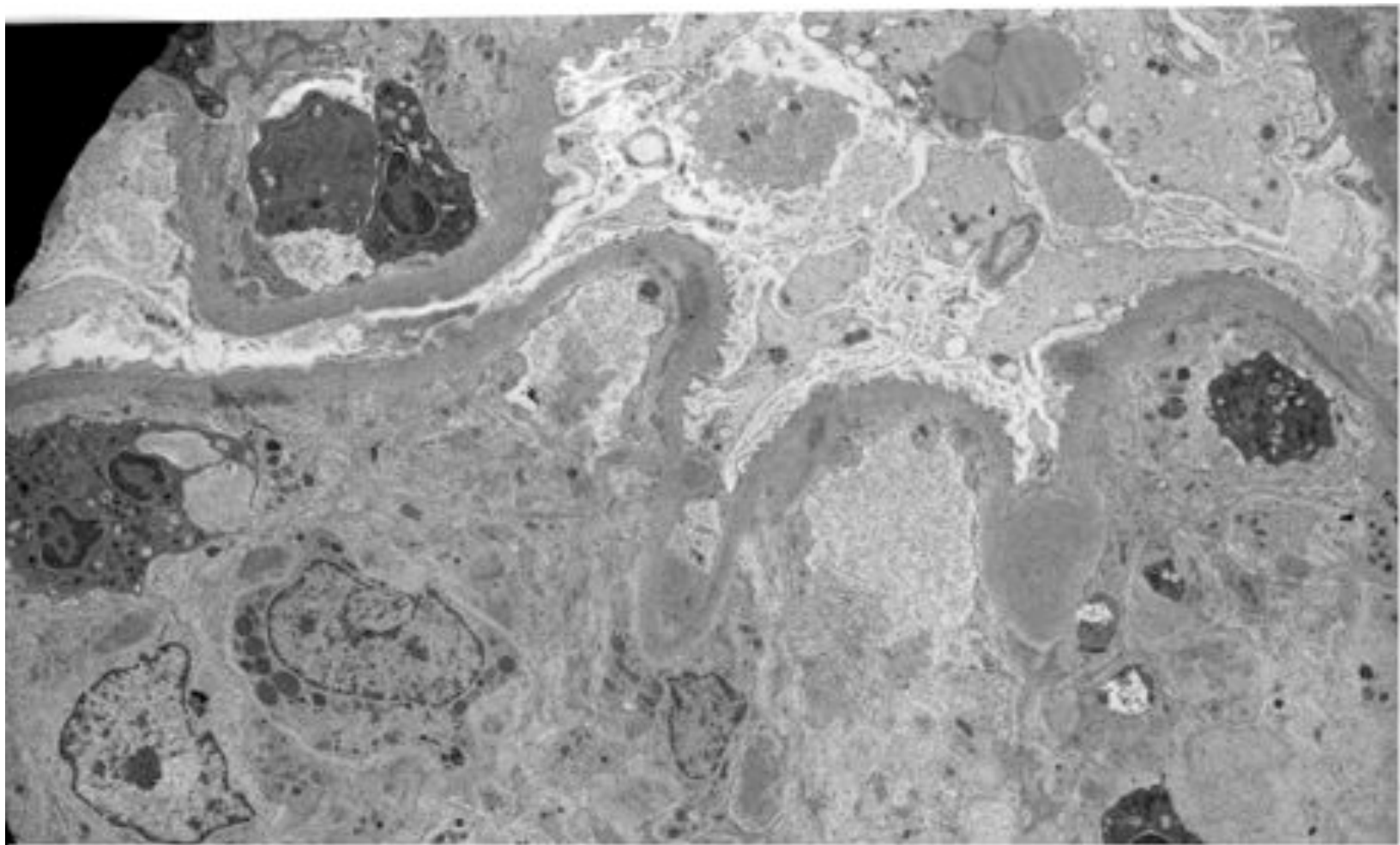


**Pattern:
Endocapillary proliferative**



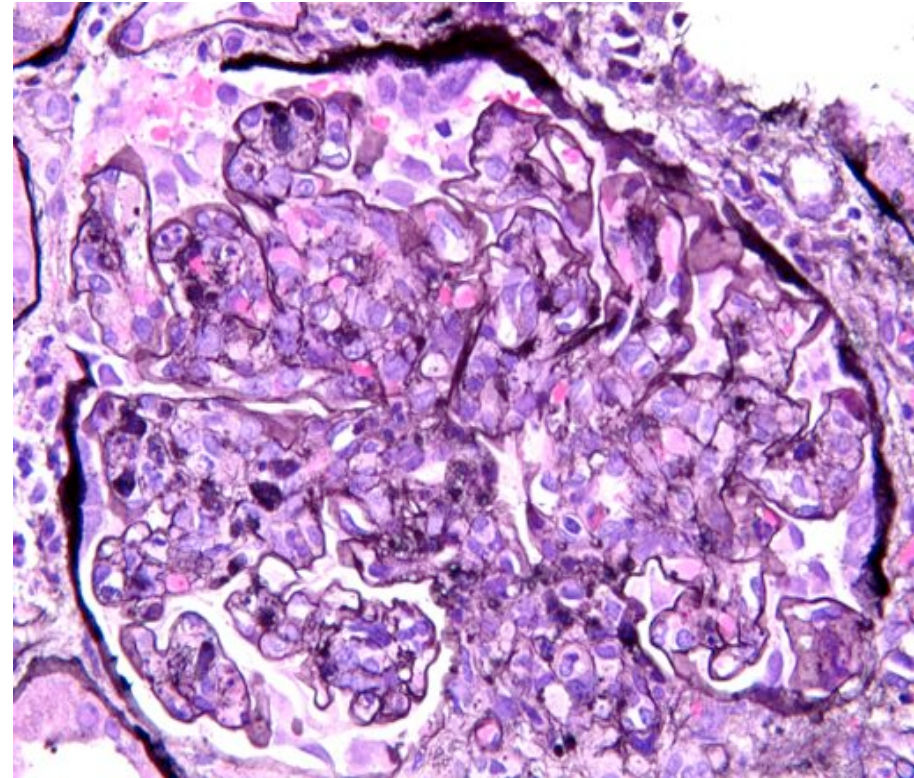






Pattern: Endocapillary proliferative

- Mesangial proliferative
- Membranous
- Mesangio-capillary proliferative
- **Endocapillary proliferative**
- Crescentic



Cases for final MRCPATH exam.

- IgA nephropathy/ Henoch-Schonlein Purpura
- Pauci-immune crescentic GN (Wegener's, Microscopic PAN)
- Anti-GBM GN ("Goodpasture's")
- Lupus (WHO III, IV, V esp)
- Membranous GN
- Mesangio-capillary GN
- Endocapillary proliferative GN
- Minimal Change
- Alport's
- Thin membrane nephropathy
- [Amyloid/Light chain nephropathy]
- FSGS
- Myeloma cast nephropathy
- TIN vs. Ascending infection
- ATN
- Essential hypertension
- Diabetes mellitus
- Malignant hypertension
- HUS/TTP
- Scleroderma
- Pregnancy
- Drugs; Familial; Malig.(DIC); Tx.
- Vasculitis
- Renovascular disease/Embolus