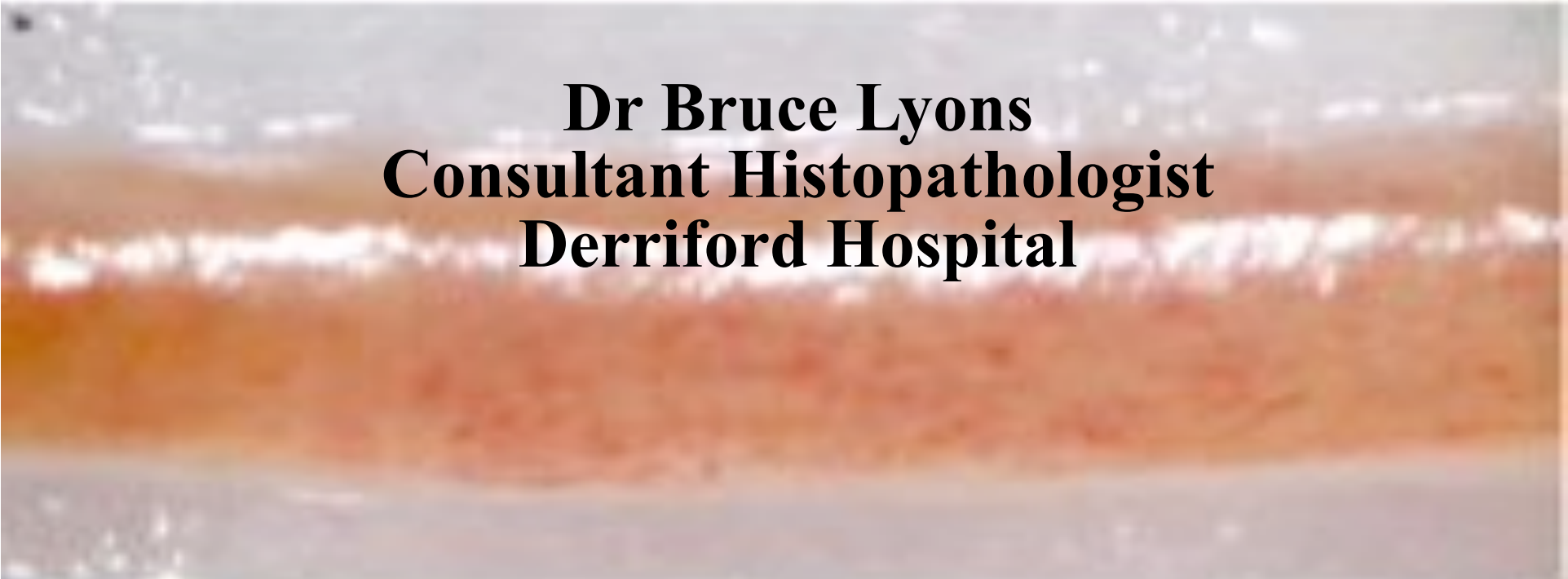
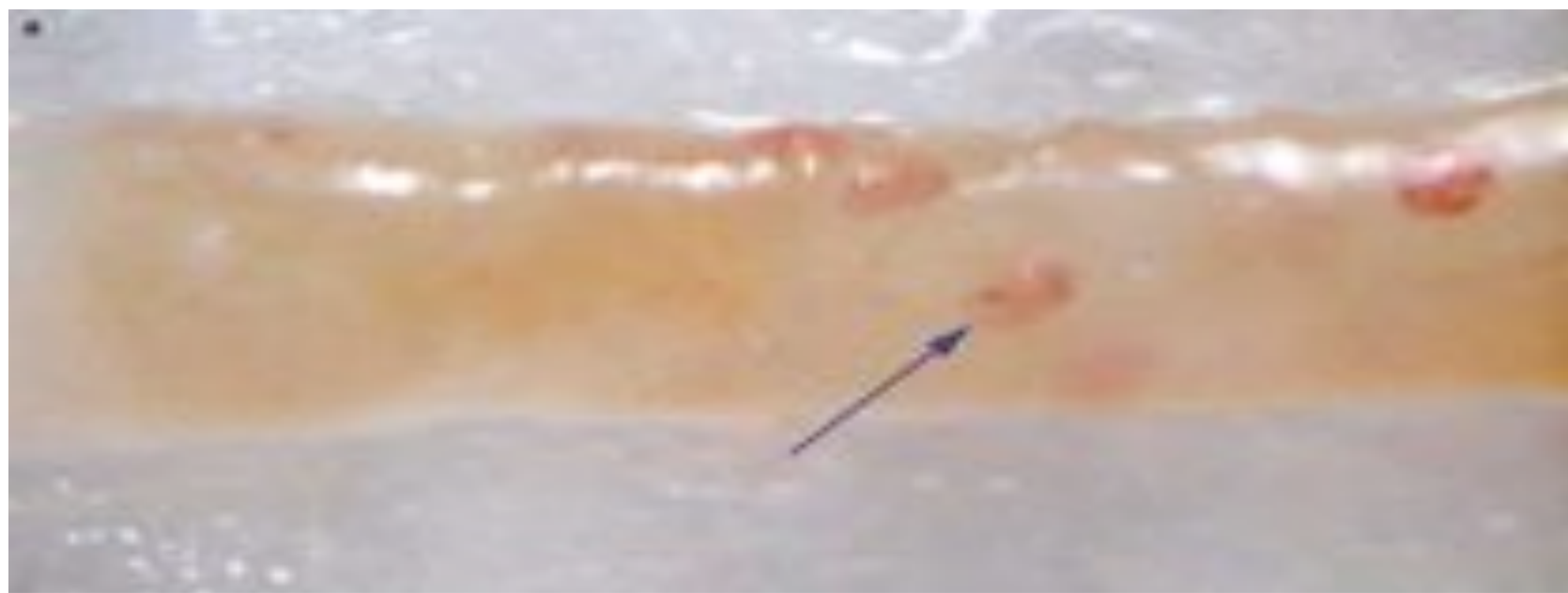




RENAL BIOPSY INTERPRETATION
(for the MRCPath Exam.)



Dr Bruce Lyons
Consultant Histopathologist
Derriford Hospital

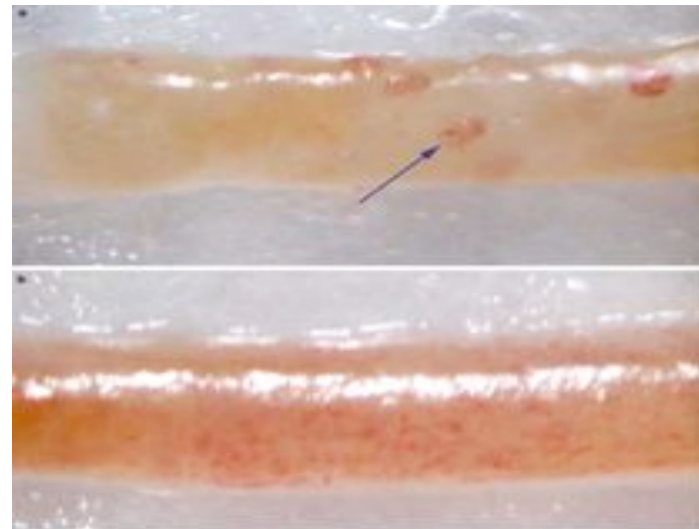


Cases for final MRCPATH exam.

- IgA nephropathy/ Henoch-Schonlein Purpura
- Pauci-immune crescentic GN (Wegener's, Microscopic PAN)
- Anti-GBM GN ("Goodpasture's")
- Lupus (WHO III, IV, V esp)
- Membranous GN
- Mesangio-capillary GN
- Endocapillary proliferative GN
- Minimal Change
- Alport's
- Thin membrane nephropathy
- [Amyloid/Light chain nephropathy]
- FSGS
- Myeloma cast nephropathy
- TIN vs. Ascending infection
- ATN
- Essential hypertension
- Diabetes mellitus
- Malignant hypertension
- HUS/TTP
- Scleroderma
- Pregnancy
- Drugs; Familial; Malig.(DIC); Tx.
- Vasculitis
- Renovascular disease/Embolus

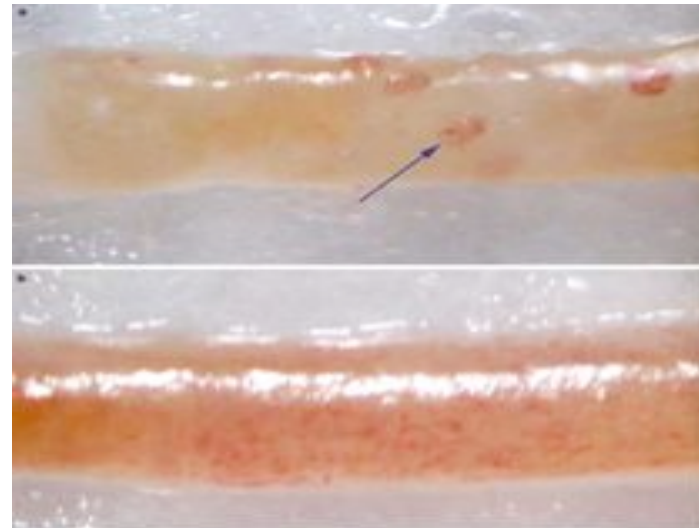
Biopsy handling

- 2 cores
- 2-3 gloms- IMF/P
- 2-3 gloms- EM
- Rest of tissue- Paraffin

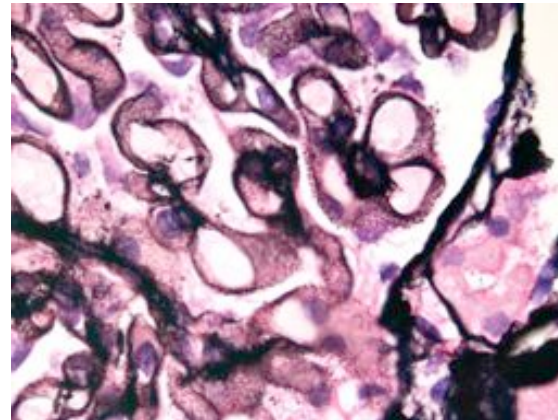
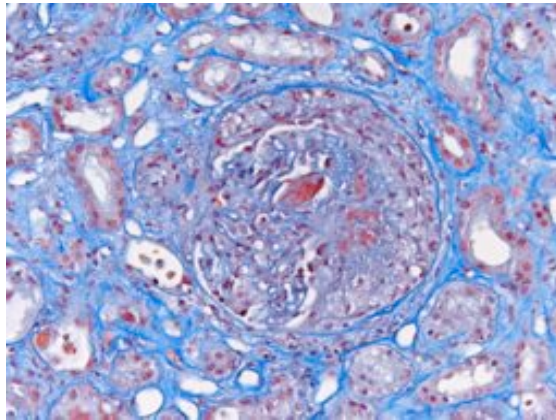
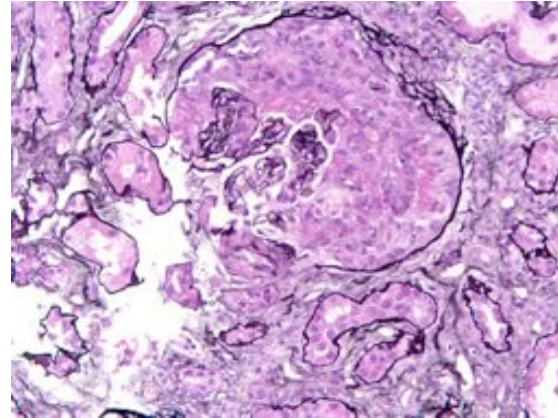
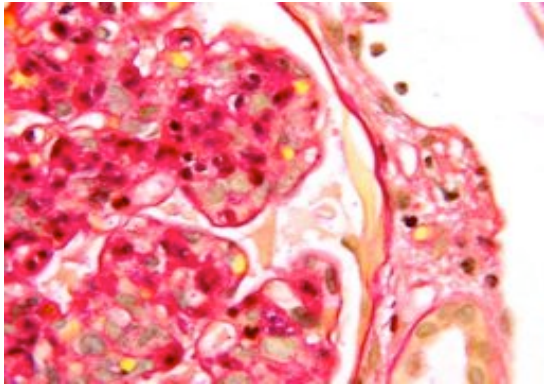


Cutting & Staining

- 2 μ Paraffin Serials
- H&E: S1 S10 S20
- Sliver (Gomori)
- PAS
- MSB (fibrin)
- EVG
- Congo Red

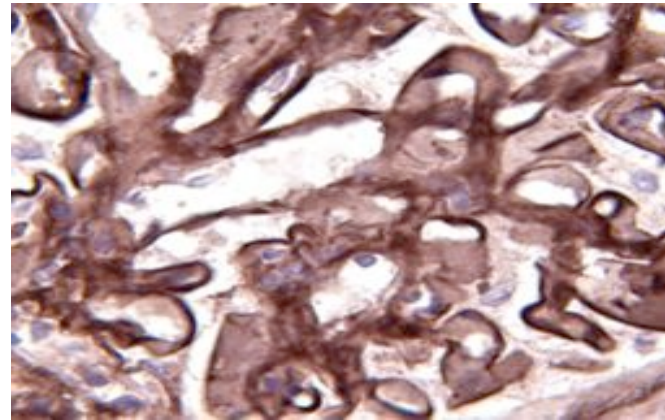
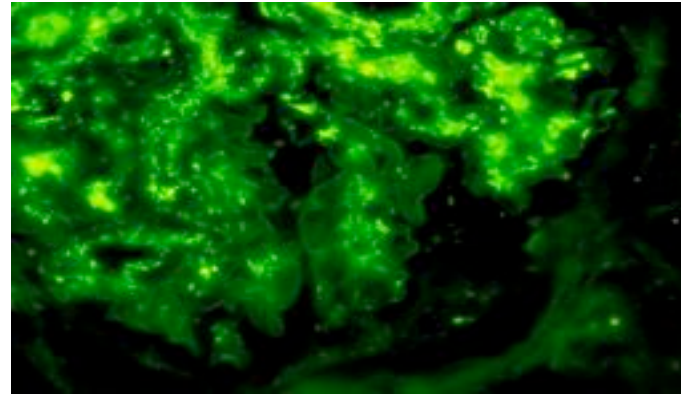


Cutting & Staining



Immunohistochemistry

- IMF (Frozen)
- IMP (Frozen or Paraffin)
- **IgA**
- **IgG**
- **IgM**
- **C3**
- **C1q**

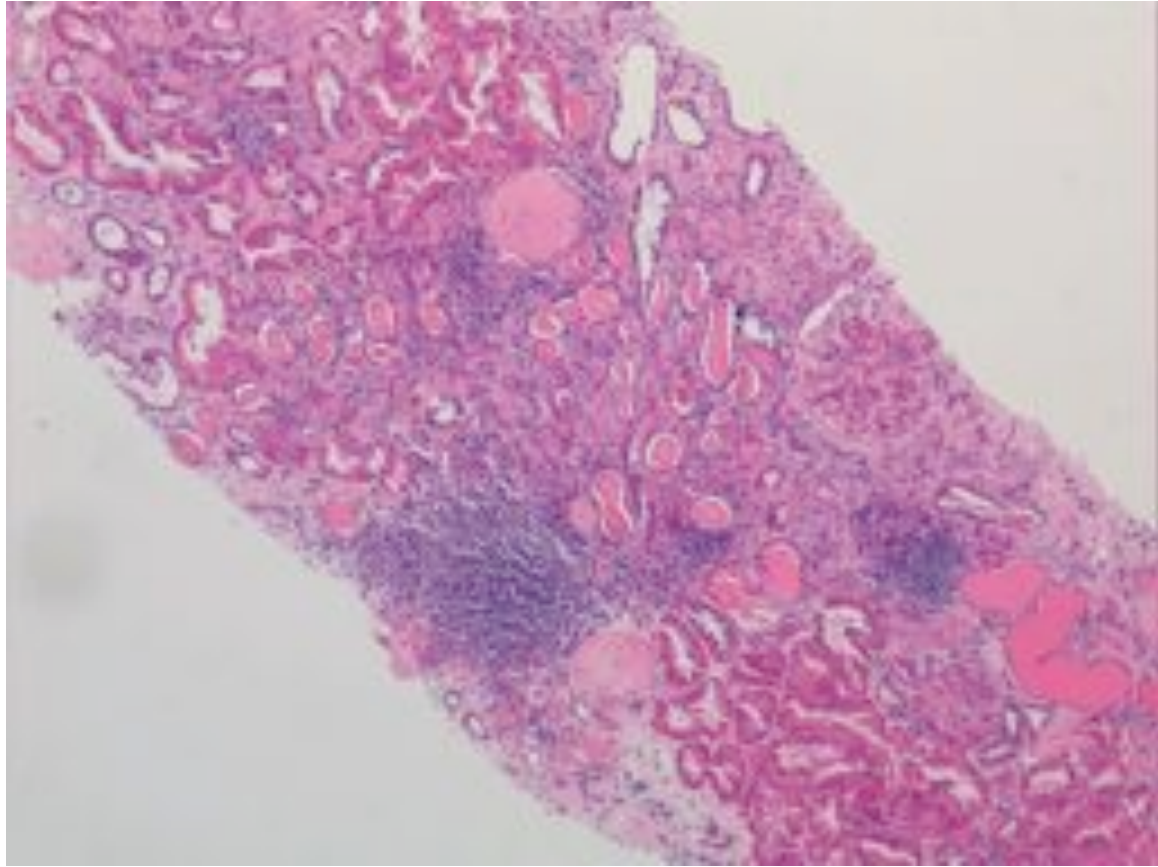


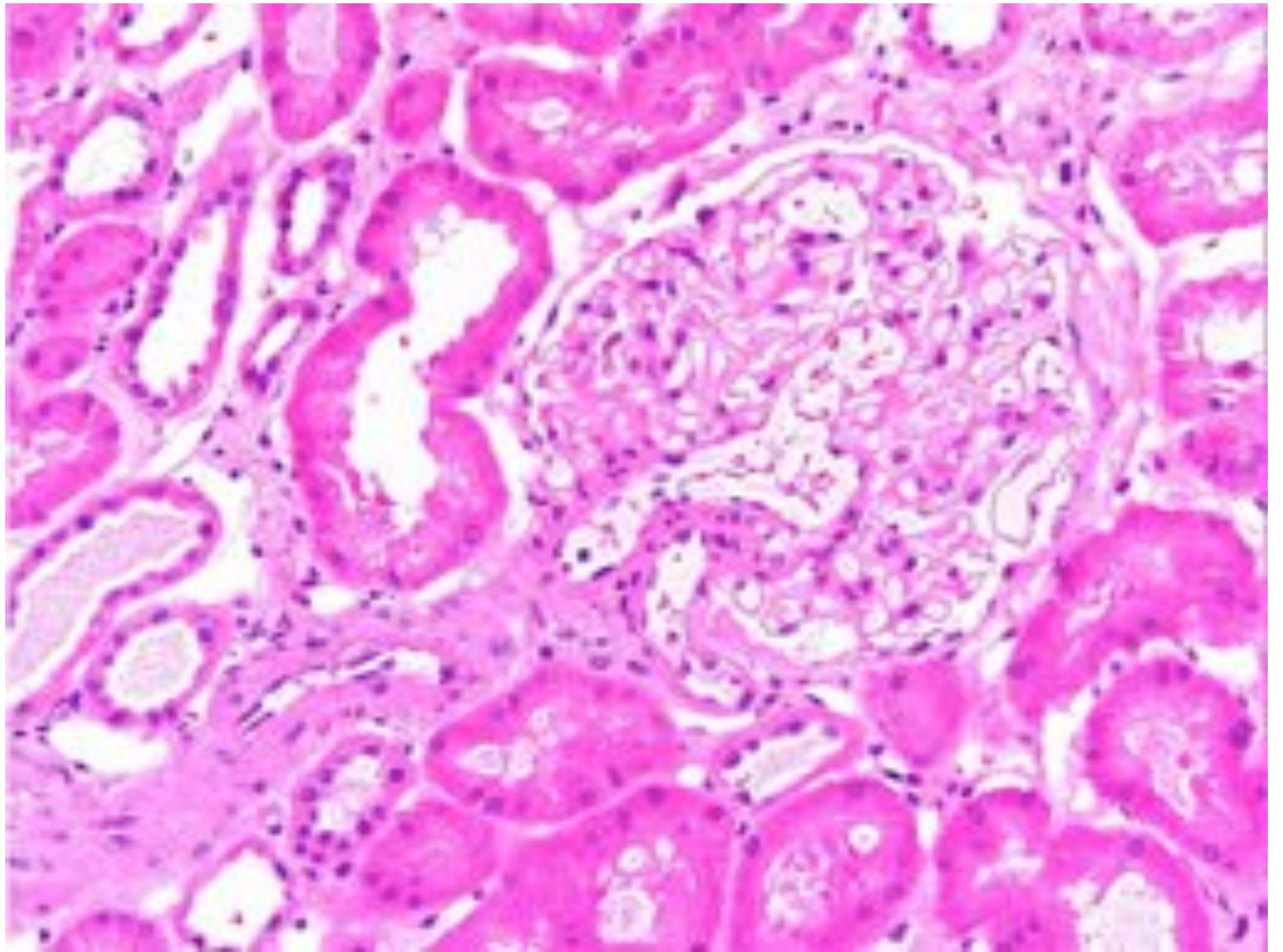
Cases for final MRCPATH exam.

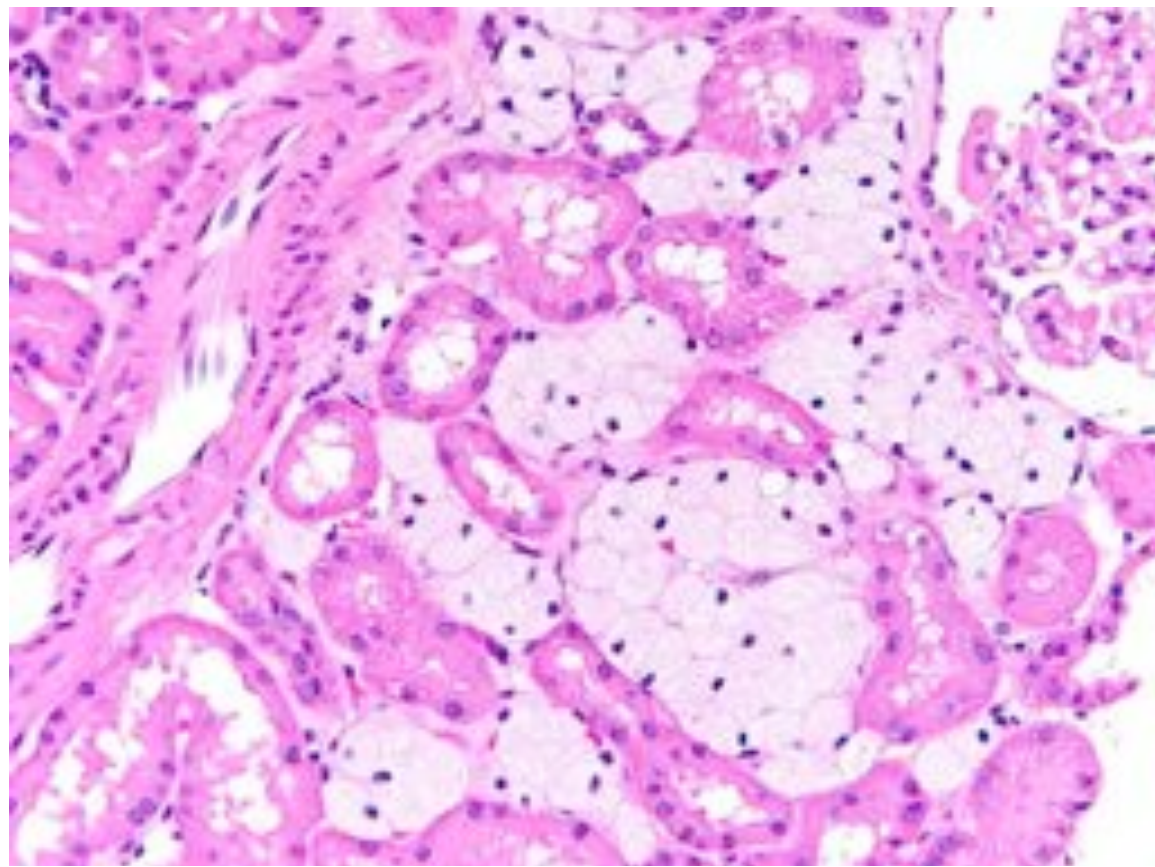
- IgA nephropathy/ Henoch-Schonlein Purpura
- Pauci-immune crescentic GN (Wegener's, Microscopic PAN)
- Anti-GBM GN ("Goodpasture's")
- Lupus (WHO III, IV, V esp)
- Membranous GN
- Mesangio-capillary GN
- Endocapillary proliferative GN
- Minimal Change
- Alport's
- Thin membrane nephropathy
- [Amyloid/Light chain nephropathy]
- FSGS
- Myeloma cast nephropathy
- TIN vs. Ascending infection
- ATN
- Essential hypertension
- Diabetes mellitus
- Malignant hypertension
- HUS/TTP
- Scleroderma
- Pregnancy
- Drugs; Familial; Malig.(DIC); Tx.
- Vasculitis
- Renovascular disease/Embolus

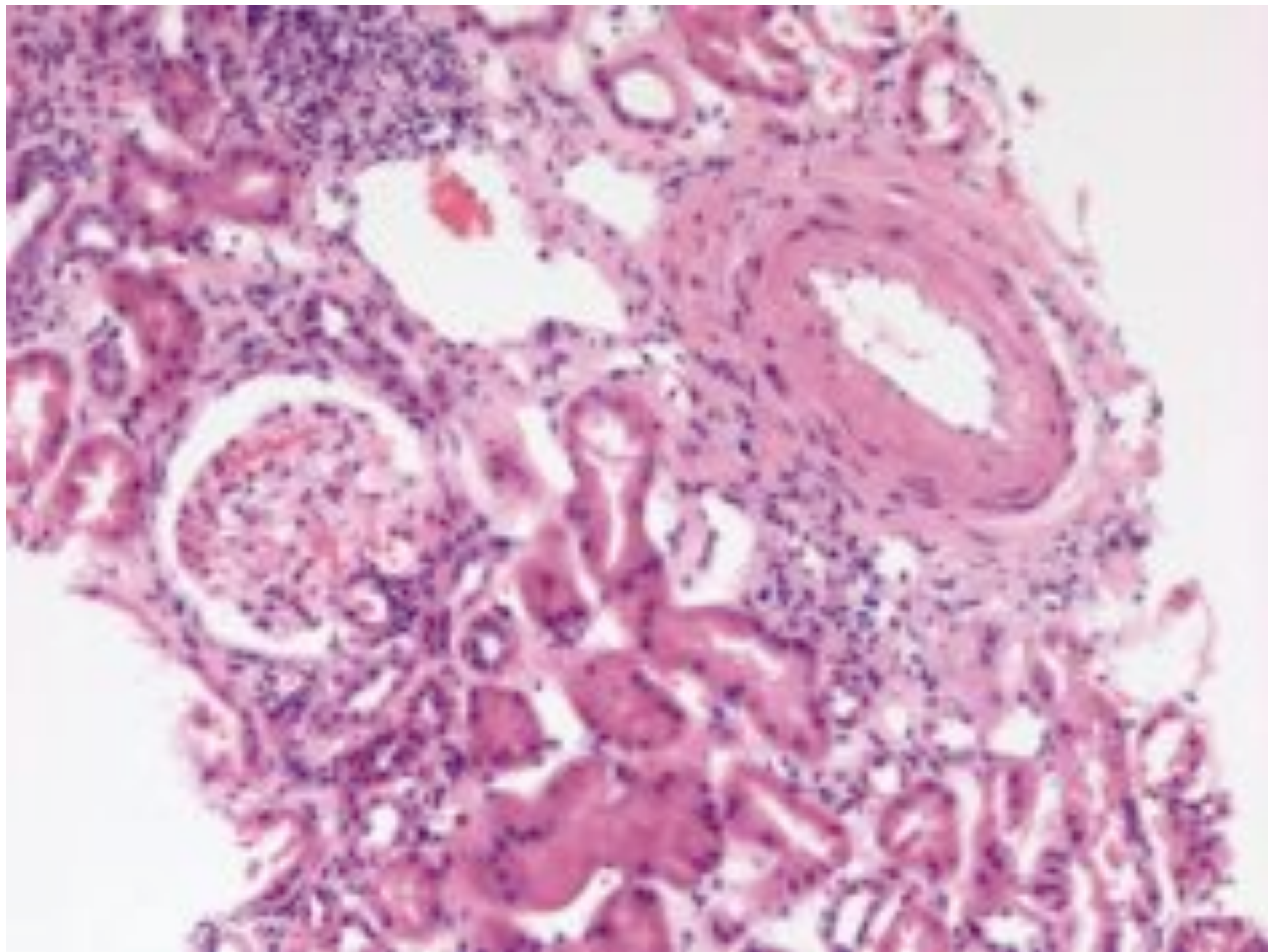
RENAL BIOPSY REPORT

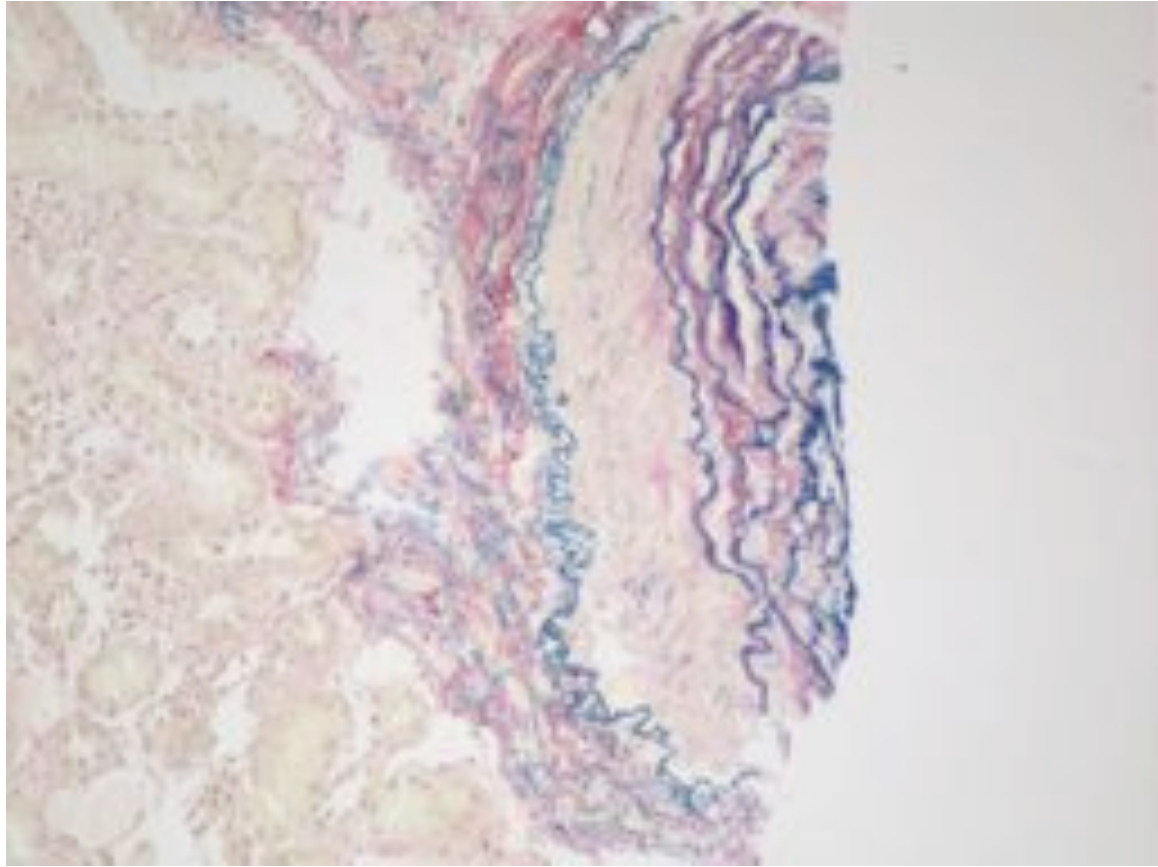
- Introduction:
- Glomeruli:
- Tubules & Interstitium:
- Vessels:
- Immunohistochemistry:
- EM
- Conclusion

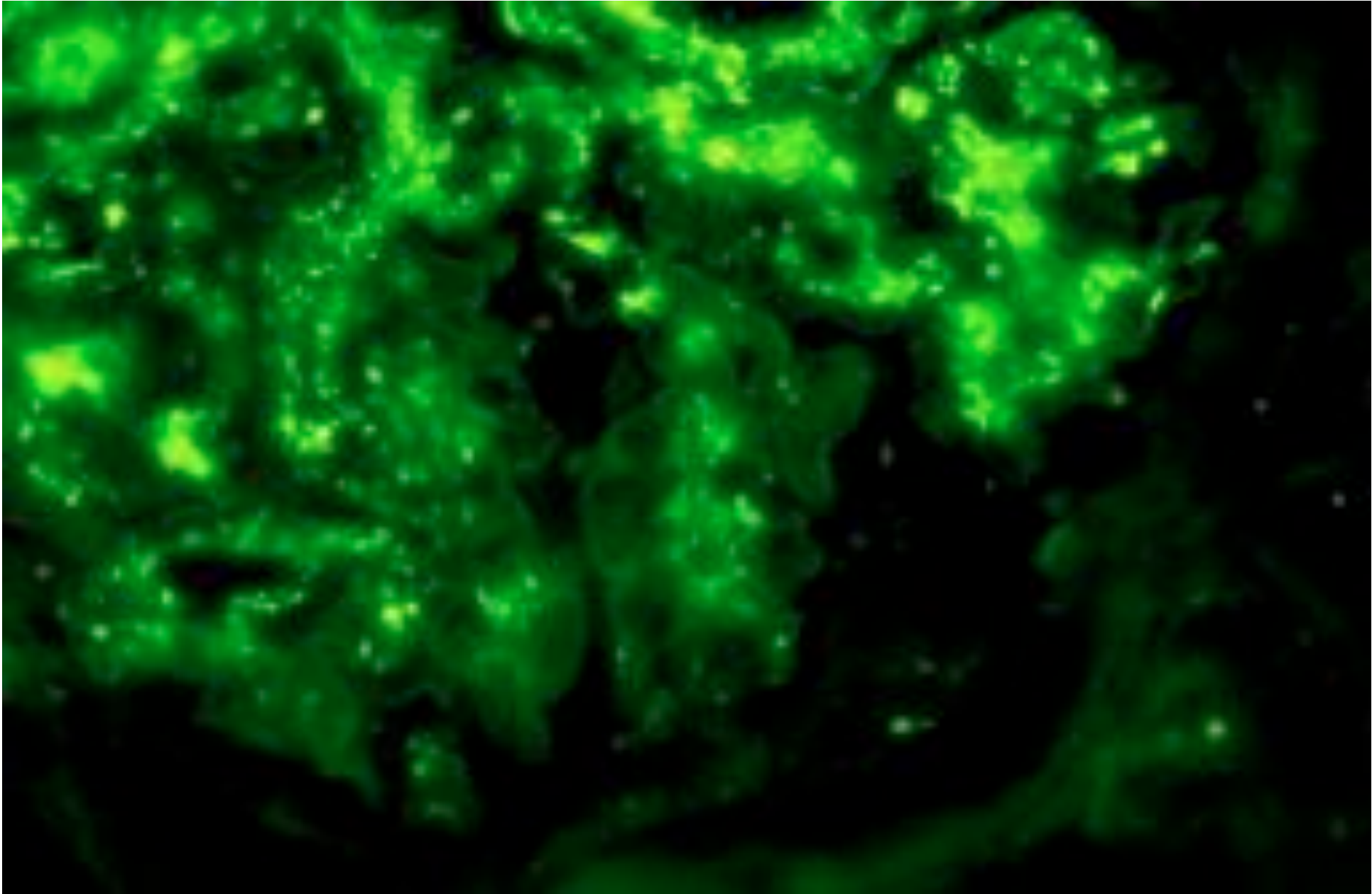


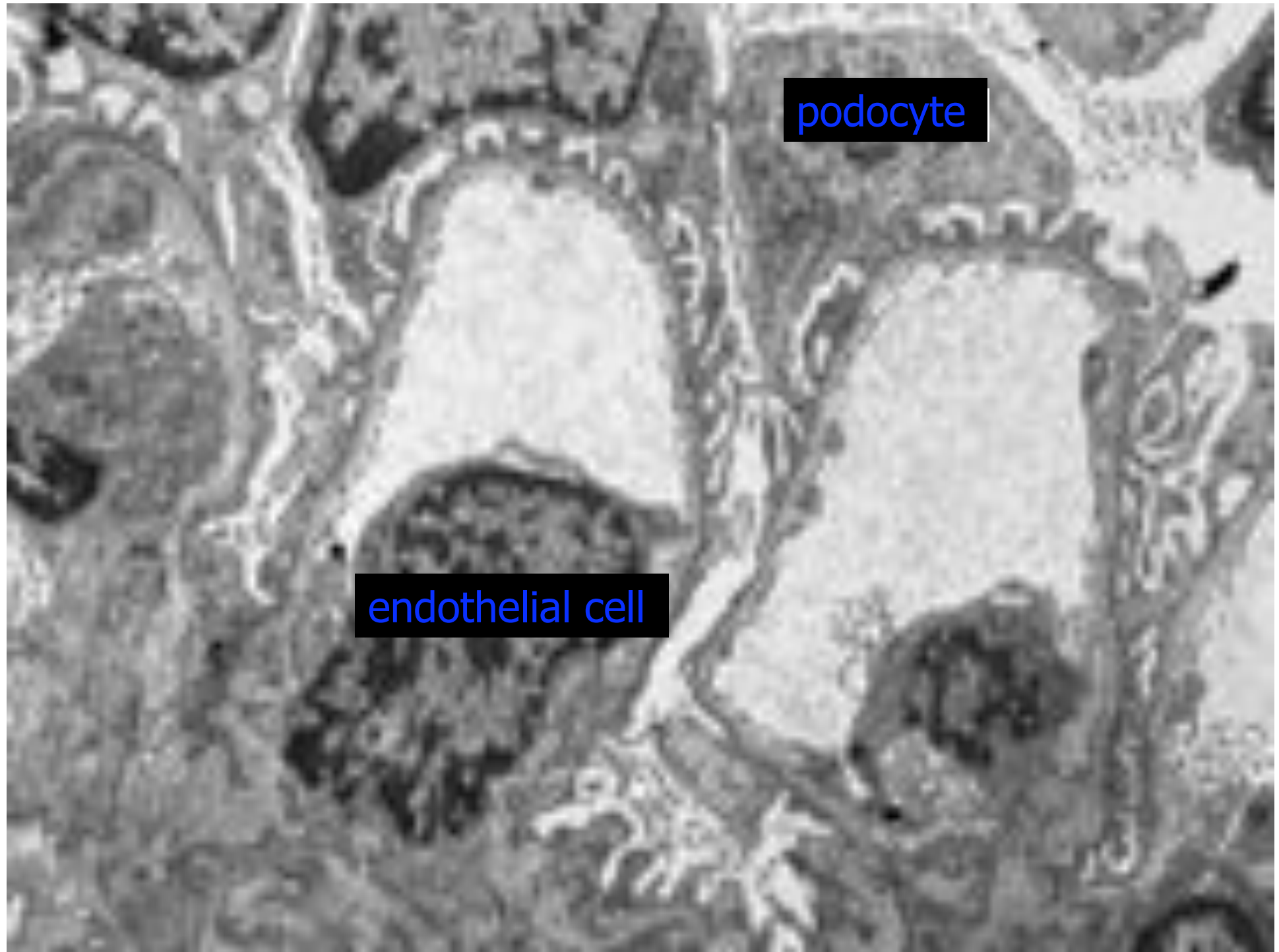












podocyte

endothelial cell

RENAL BIOPSY REPORT

- Introduction:
- Glomeruli:
- Tubules & Interstitium:
- Vessels:
- Immunohistochemistry:
- EM
- Conclusion

Clinical history

- Asymptomatic microscopic haematuria
- Nephritic

- Mild proteinuria
- Nephrotic

- ARF (+/- above)
- CRF (+/- above)

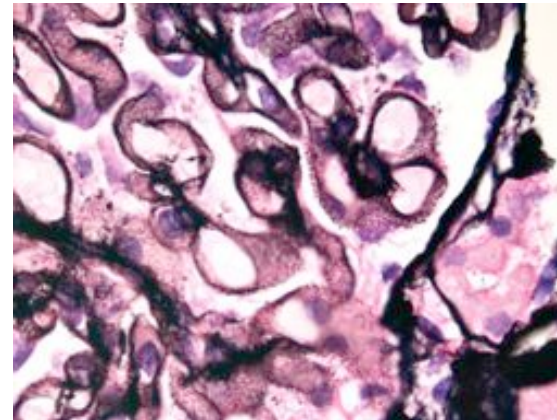
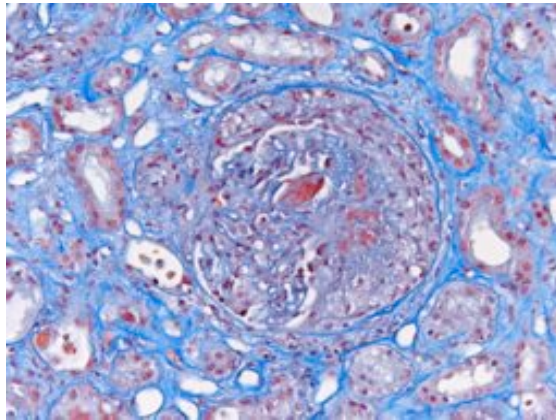
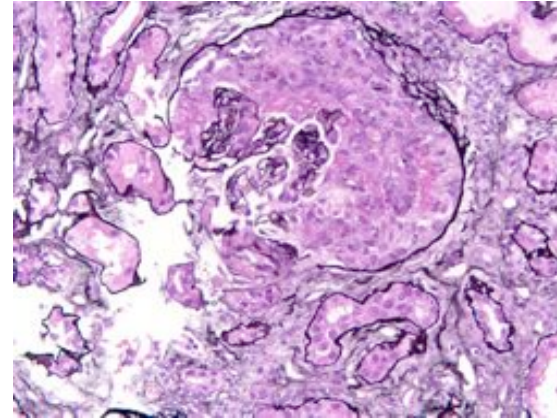
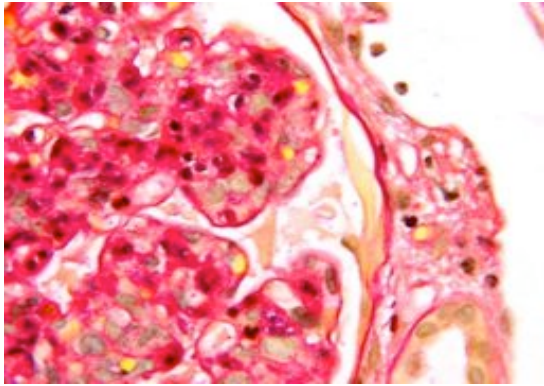
CONCLUSION:

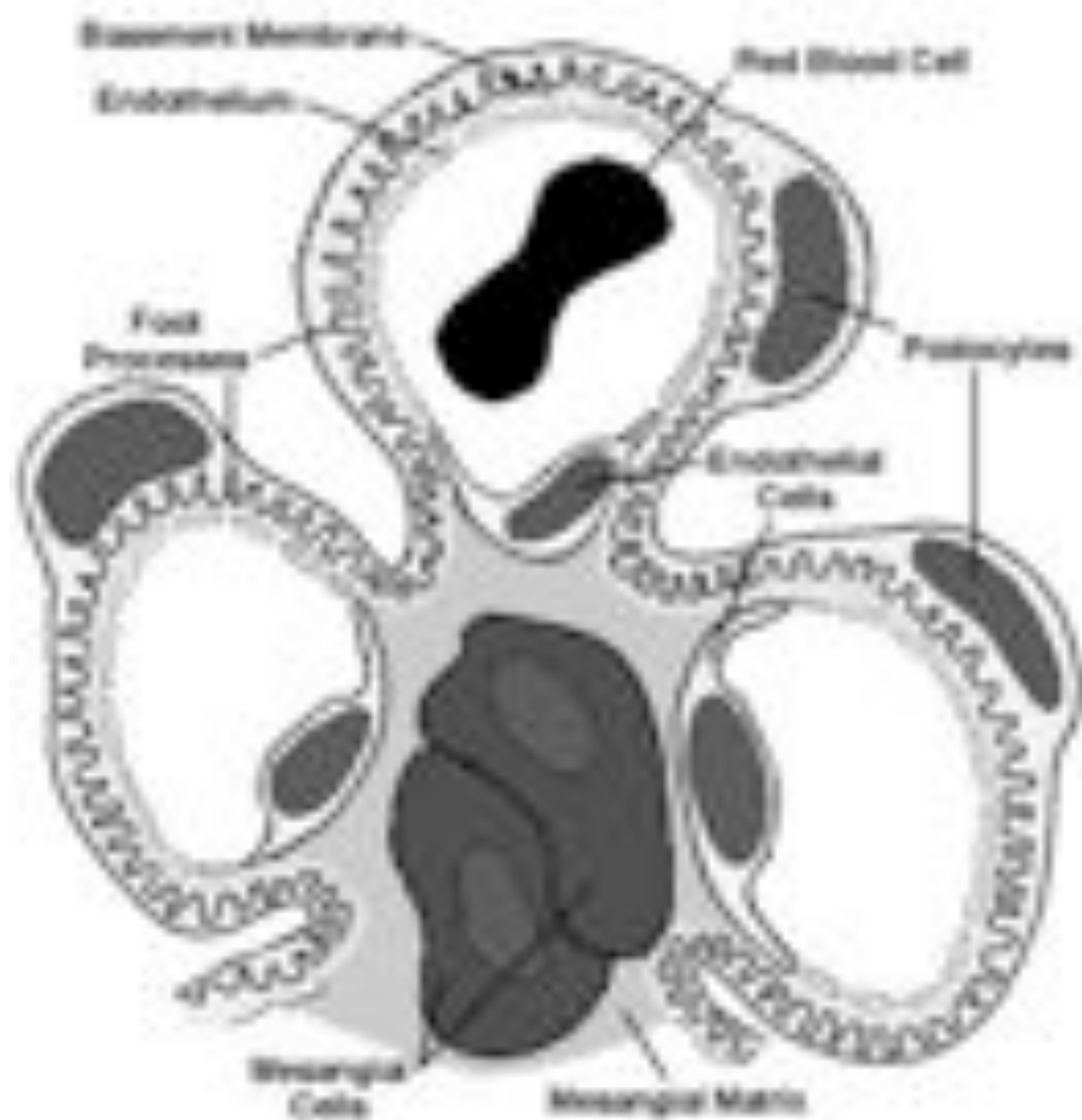
- Primary diagnosis / pathology.
 - (+/- **associated pathologies (good eg. = myeloma)**)
- Important secondary pathology(ies)
 - **eg. Arteriosclerosis, HTN, DM**
- (Multiple unrelated pathologies uncommon)
- Aetiology but not pathogenesis

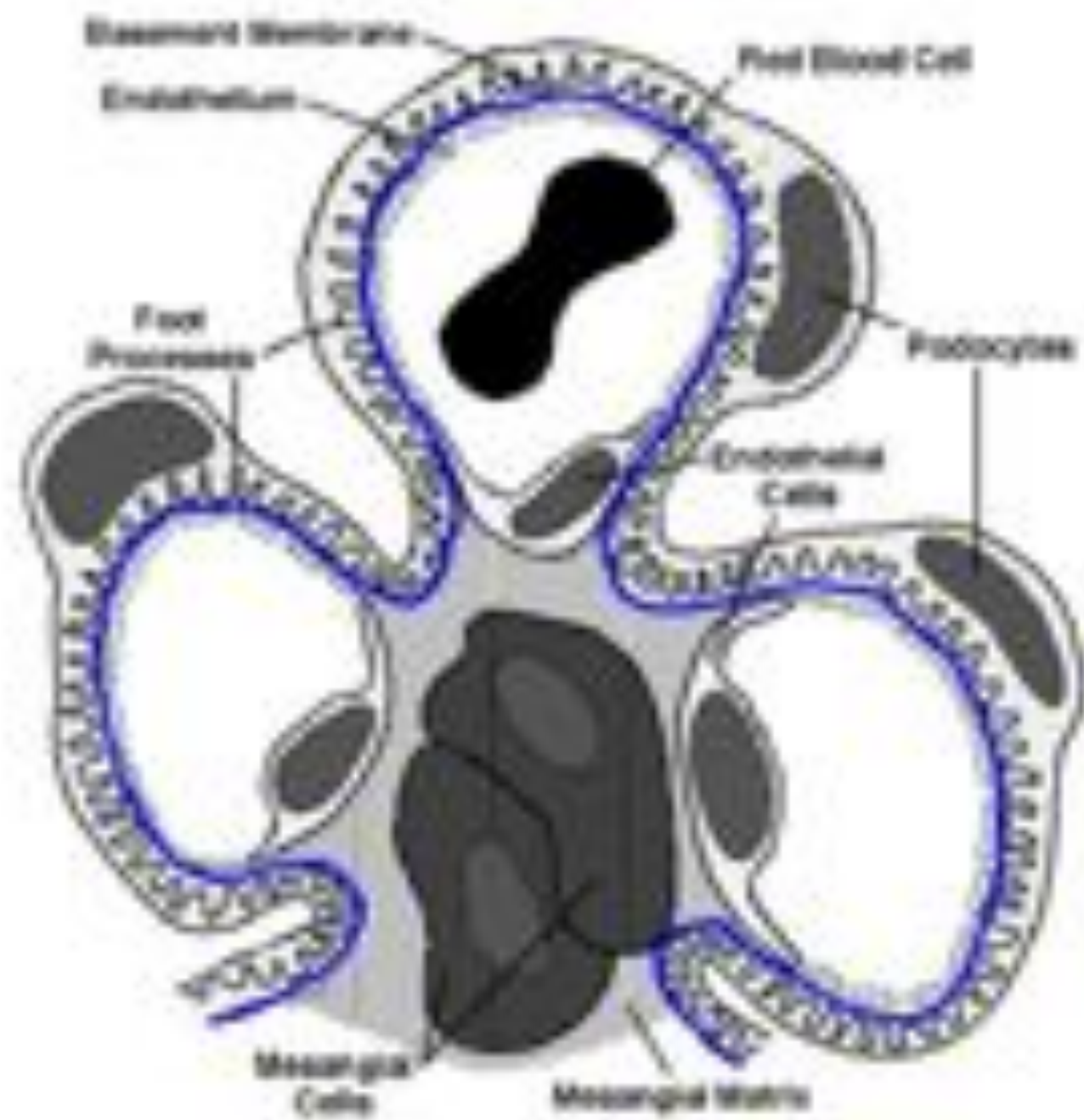
Cases for final MRCPATH exam.

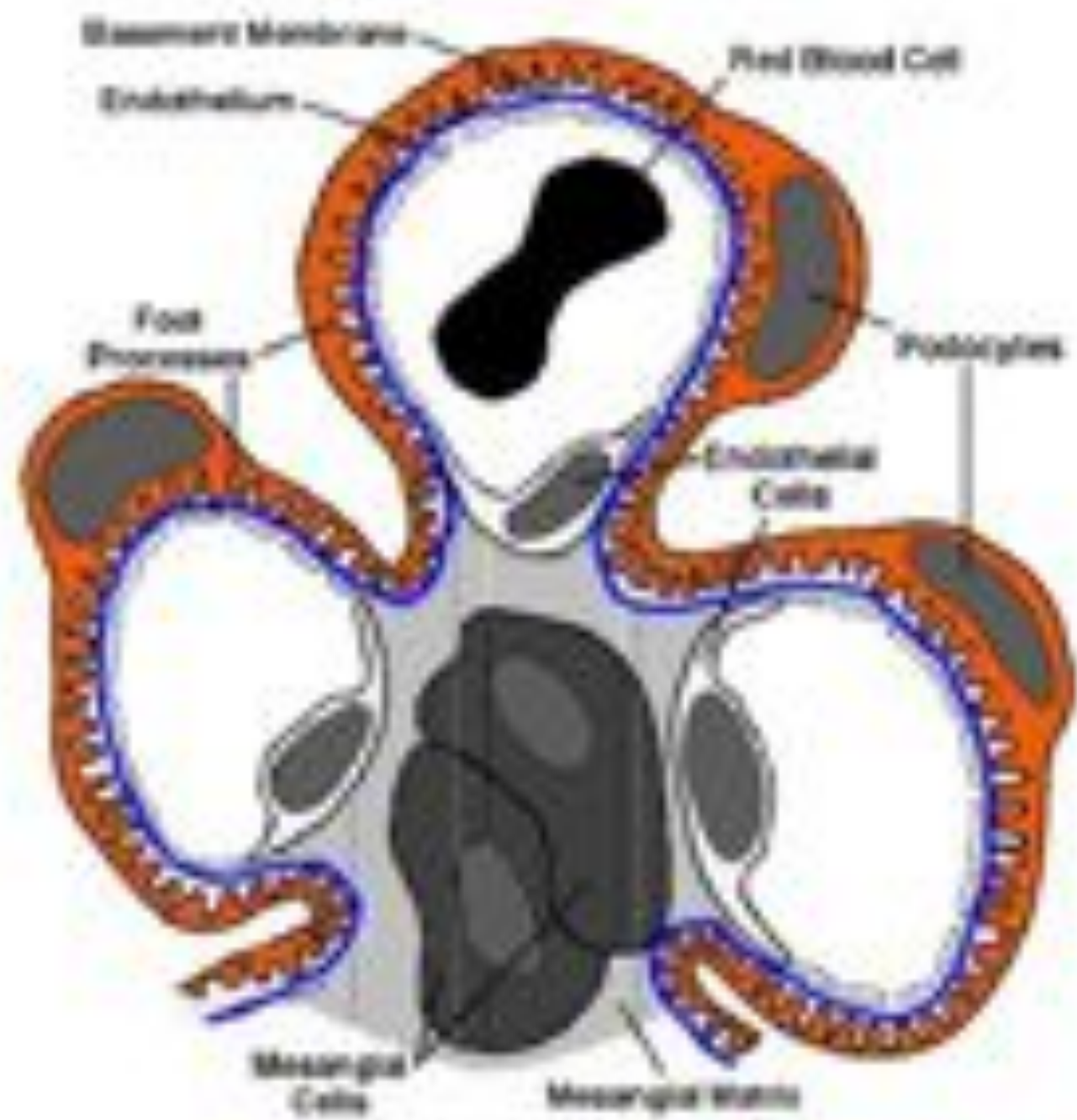
- IgA nephropathy/ Henoch-Schonlein Purpura
- Pauci-immune crescentic GN (Wegener's, Microscopic PAN)
- Anti-GBM GN ("Goodpasture's")
- Lupus (WHO III, IV, V esp)
- Membranous GN
- Mesangio-capillary GN
- Endocapillary proliferative GN
- Minimal Change
- Alport's
- Thin membrane nephropathy
- [Amyloid/Light chain nephropathy]
- FSGS
- Myeloma cast nephropathy
- TIN vs. Ascending infection
- ATN
- Essential hypertension
- Diabetes mellitus
- Malignant hypertension
- HUS/TTP
- Scleroderma
- Pregnancy
- Drugs; Familial; Malig.(DIC); Tx.
- Vasculitis
- Renovascular disease/Embolus

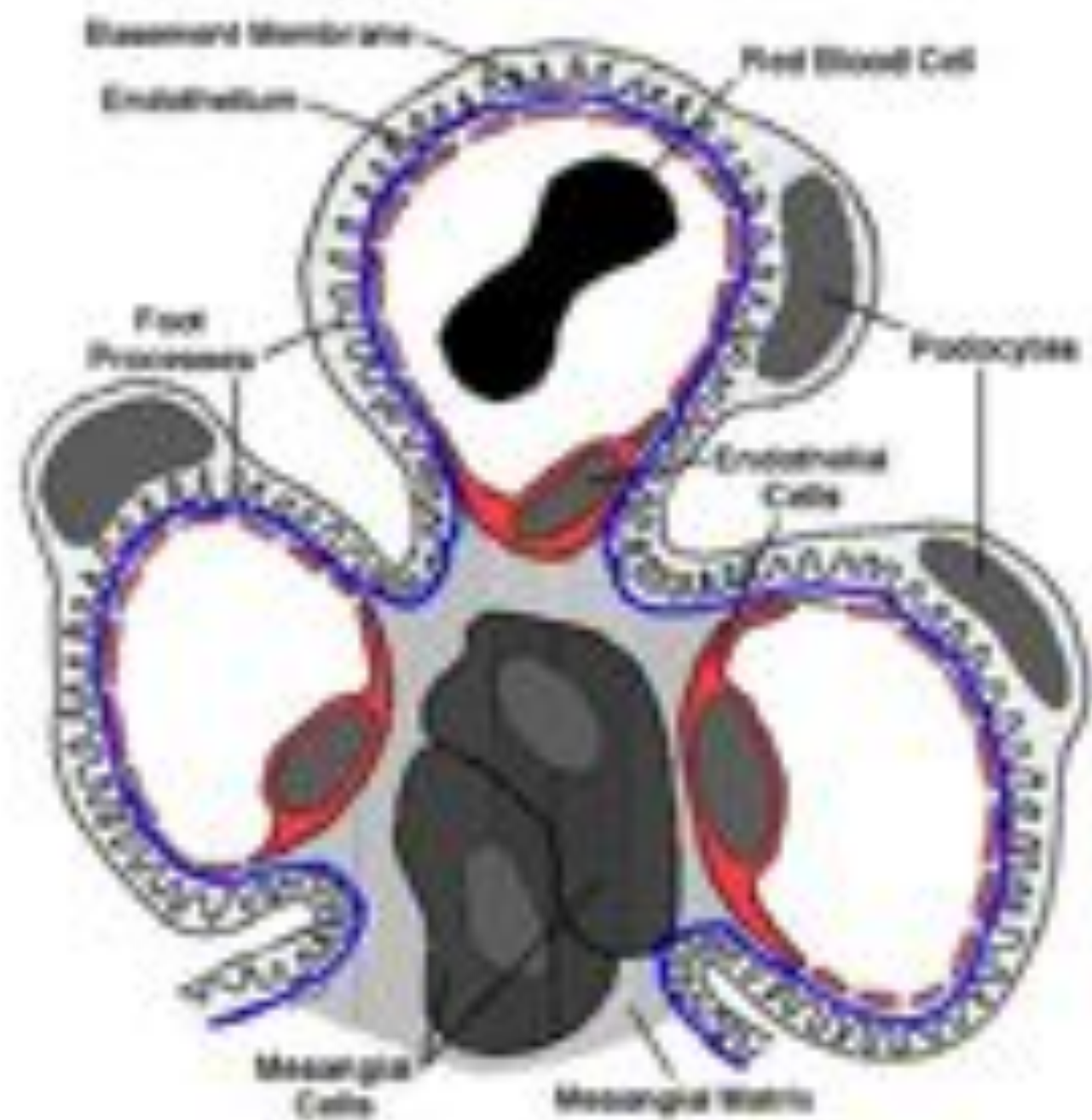
Cutting & Staining

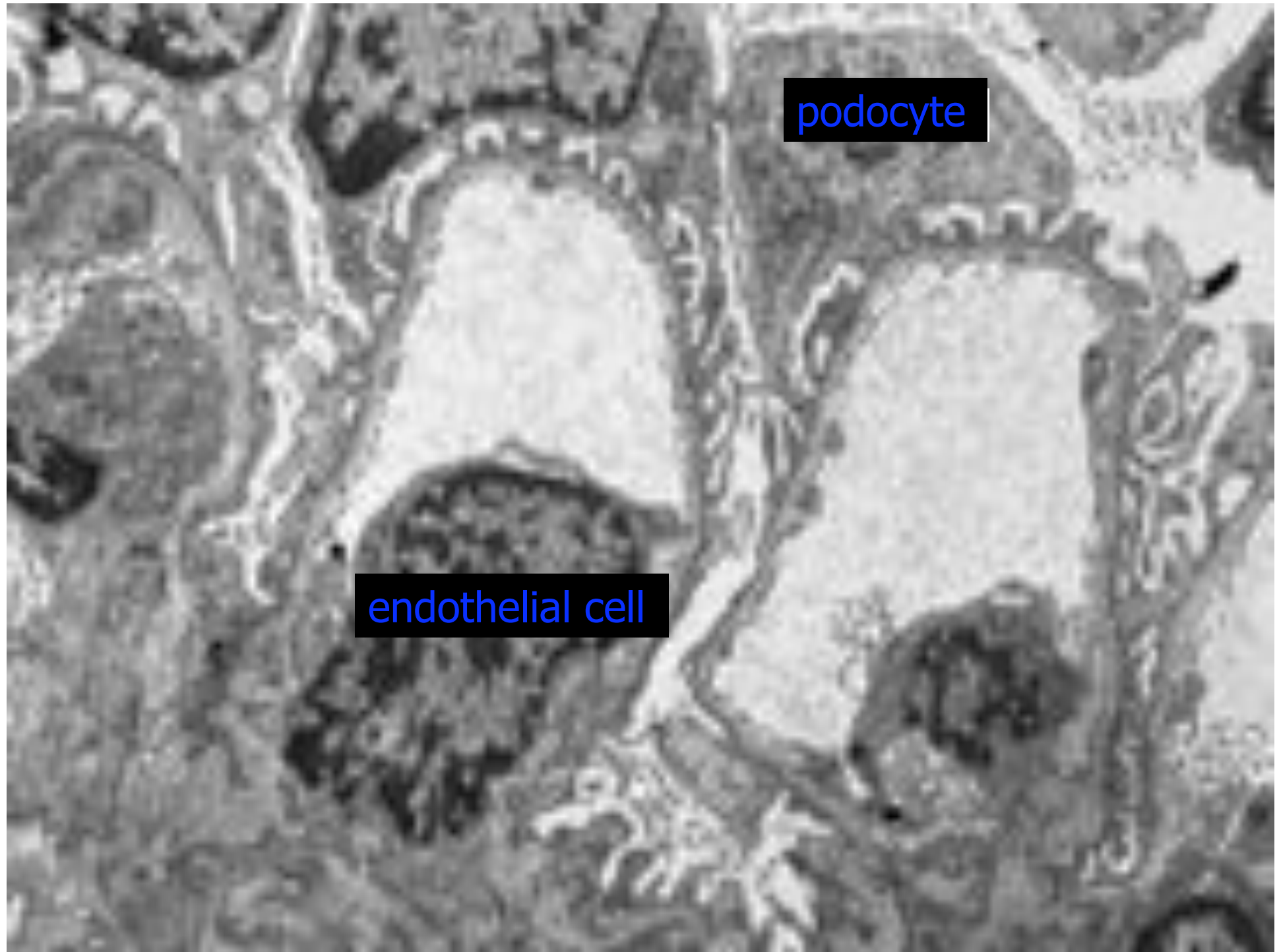






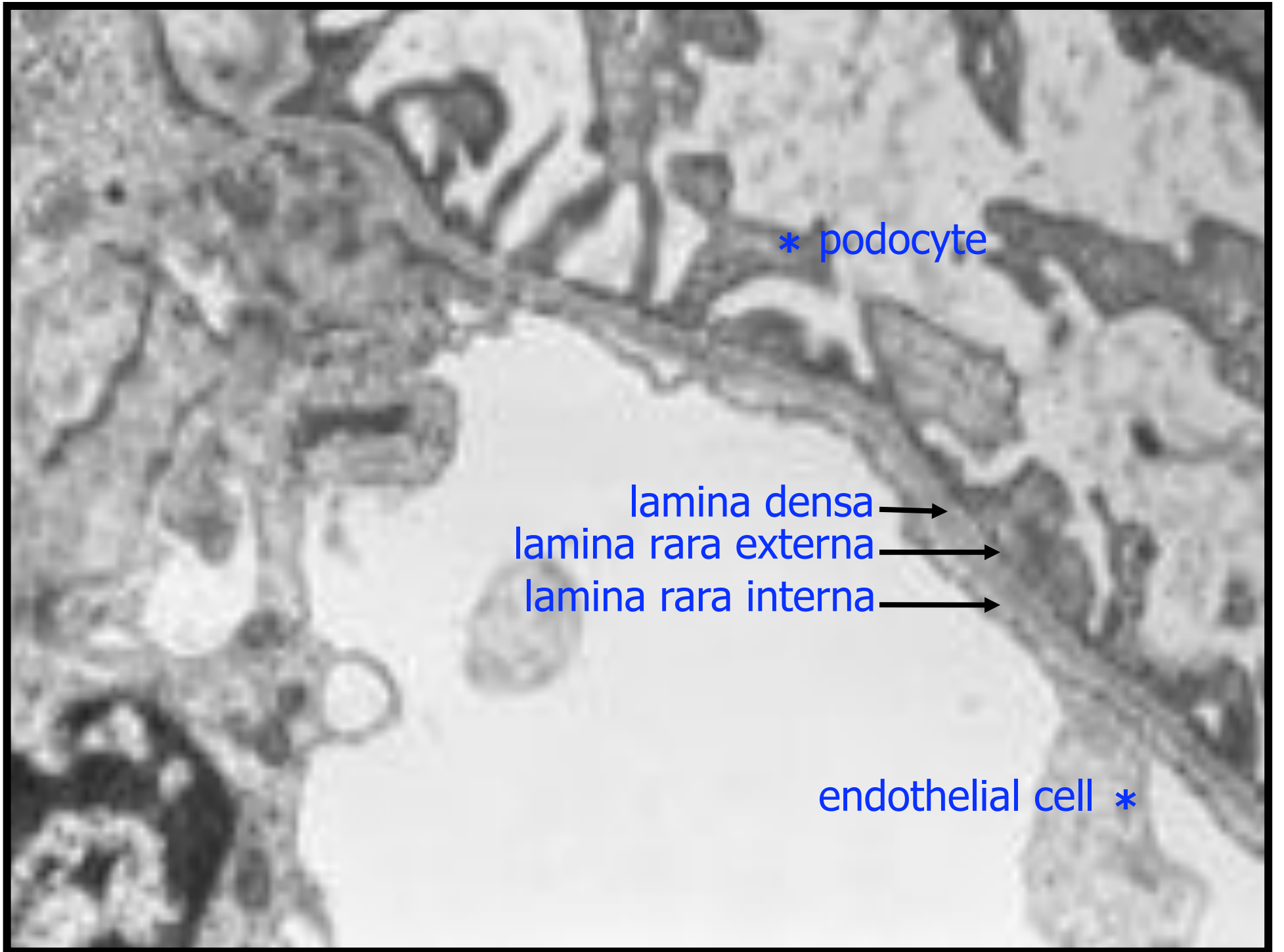






podocyte

endothelial cell



* podocyte

lamina densa →

lamina rara externa →

lamina rara interna →

endothelial cell *

